

Harry S. Truman Reservoir Management Lands Area Plan

Fifteen Year Area Management Plan
FY 2013-2028




Wildlife Division Chief

6/17/14
Date

Harry S. Truman Reservoir Management Lands Area Plan Approval Page

Len Gilmore, Wildlife Division

Matt Hill, Wildlife Division

Monte McQuillen, Wildlife Division

Mike Bayless, Fisheries Division

Josh Shroyer, Forestry Division

Larry Rizzo, Wildlife Division

Kevin Dixon, Protection Division

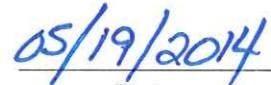
Mark Miller, Outreach & Education Division

Sharron Gough, Private Land Services Division

Aimee Coy, Private Land Services Division



Kansas City Regional Coordinating Team Chair



Date



Wildlife Division Unit Chief



Date

OVERVIEW

- **Official Area Name:** Harry S. Truman Reservoir Management Lands. This plan has been prepared with a fifteen-year time span, as opposed to the recommended ten-year span, in order to correspond with the 15-year Forest Inventory schedule.

There are eighteen wildlife management areas (WMA), as well as the Clinton Site included within this Truman Reservoir Management unit. Ownership is retained by the United States Army Corps of Engineers (USACE) in all cases. The Department of Conservation (MDC) holds rights of occupancy, which are outlined, along with restrictions, in the License Agreement DACW 41-3-09-0201. A copy of the License is located in Realty Office files at MDC Headquarters in Jefferson City.

- **Official Area Number:** 7807
- **Year of Initial License with the United States Army Corp of Engineers (USACE):** According to Dave Young (MDC retired Wildlife Regional Supervisor), the first agreement with USACE began in 1973. Subsequently, two five-year cooperative agreements were put together, one for 1973-1977 and the other for 1978-1982. In 1983, the first 25-year license was initiated for 1983-2007, identified as DACW 41-3-83-18. The current license, November 16, 2010 to November 15, 2035, is identified as DACW 41-3-09-0201.
- **Acreage and County:** Harry S. Truman Reservoir management lands comprise approximately 58,133 acres of USACE lands associated with the reservoir in Benton, St. Clair, Henry and Hickory Counties.
- **Division Administrative & Maintenance Responsibility:**

Kansas City Region Wildlife Division, Kansas City Region Forestry Division, and Southwest Region Wildlife Division are the Divisions/Units with primary responsibility for both administration and maintenance of Harry S. Truman Reservoir Management Lands.

Kansas City Region Fisheries Division will be responsible for area stream and pond management, with Southwest Region Fisheries Division having responsibility for those resources on the Cross Timbers WMA. Outreach and Education Divisions will lend support for special hunts as appropriate. Specific assignments appear below:

AREA	DIVISION WITH ADMINISTRATIVE RESPONSIBILITY	DIVISION/OFFICE WITH MAINTENANCE RESPONSIBILITY
Bethlehem WMA	Wildlife	Wildlife/Clinton
Brownington WMA	Wildlife	Wildlife/Clinton
Deepwater Creek WMA	Wildlife	Wildlife/Clinton
Grand River Bottoms WMA	Wildlife	Wildlife/Clinton
Leesville WMA	Wildlife	Wildlife/Clinton
Little Tebo Creek WMA	Wildlife	Wildlife/Clinton
Tebo Islands WMA	Wildlife	Wildlife/Clinton
Upper Tebo Creek WMA	Wildlife	Wildlife/Clinton
Clinton Site	Forestry	Forestry/Clinton
Sac Osage WMA	Wildlife	Wildlife/Osceola
Salt Creek WMA	Wildlife	Wildlife/Osceola
Gallinipper Creek WMA	Wildlife	Wildlife/Osceola
Little Pomme de Terre WMA	Wildlife	Wildlife/Osceola
Valhalla WMA	Wildlife	Wildlife/Osceola
Weaubleau Creek WMA	Wildlife	Wildlife/Osceola
Brush Creek WMA	Forestry	Forestry/Clinton
Cedar Creek WMA	Forestry	Forestry/Clinton
Gouge Eye WMA	Forestry	Forestry/Clinton
Cross Timbers WMA	Wildlife	Southwest Region Wildlife/Lamar

Statements of Purpose:

A. Strategic Direction

Manage for wildlife associated with grassland, old field, woodland, wetland, and forest resources, with emphasis on upland game and recreational opportunities. Manage fisheries resources in an effort to provide recreational sport fishing opportunities. Specific management practices will be determined by the opportunities present, resources available, and other variables, in a cost-efficient manner.

B. Desired Future Condition

Suitable herbaceous cover (primarily woodlands and wildlife friendly grasslands) required for healthy, stable wildlife populations will be maintained at current levels, along with functioning stream corridors; and continued sport fishing opportunities in managed ponds.

C. Federal Aid Statement

N/A

GENERAL INFORMATION AND CONDITIONS

I. Special Considerations

A. Priority Areas: Cave Focus Area

B. Natural Areas: None

C. Other: None

II. Important Natural Features and Resources

A. Species of Conservation Concern: Species of conservation concern are known from this area. Area Managers should consult the MDC Natural Heritage Database annually and review all management activities with the MDC Natural History Biologist.

B. Caves: Yes. Area Managers review all management activities with the MDC Natural History Biologist. Managers should follow the Cave Management Policy found in the MDC Resource Policy Manual.

C. Springs: None

D. Other: None

III. Existing Infrastructure

A. Clinton Office

The Clinton site contains the following infrastructure: Office, two maintenance and storage sheds, one open-ended storage shed, chemical shed, oil/chemical shed, three grain bins, weather station, and fuel containment facility.

B. Grand River Bottoms

Grand River Bottoms WMA has the following infrastructure: Concrete pump station with two 25 hp electric motors; and at Golden Valley Shooting Range, three shooting shelters, one privy and 20 shooting benches.

C. Osceola Shop

Support for operations on the south side of Harry S. Truman WMA is housed in a leased shop/office in Osceola. The shop provides a central location for area staff and equipment.

D. Further details of Infrastructure by WMA appear in the Table below:

Table 1 Infrastructure on Areas

Wildlife Management Area	Parking Lots	Road/Trail (miles)	Privies	Levees	Dams	Managed Ponds	Boat Accesses	Other
Gallinipper Creek	2	0.5		1				
Sac Osage	7	3		5				
Salt Creek	6	2		2				
Valhalla	1							
Cross Timbers	7	4					1	
Little Pomme de Terre	2	2						
Deepwater	7	7			3	3		
Grand River	9	8	1		3	3		Golden Valley Shooting Range
Bethlehem	9	10			4	4		
Upper Tebo	11	1			1	1		
Leesville	0	0.5						
Little Tebo	3	2						
Brownington	2	1						
Cedar Creek	0	3						
Brush Creek	3	4						

Gough Eye	1	2						
Weaubleau Creek	4	3		1				
Tebo Island								
Clinton Site	2	4.5			2	2		Golden Valley Archery Range
Totals	76	57.5	1	9	13	13	1	

IV. Area Restrictions or Limitations

- A. Deed restrictions or ownership considerations:** Harry S. Truman Reservoir Management Lands are governed under License number DACW 41-3-09-0201 with the USACE.
MDC provides the USACE with an Annual Report documenting all income, expenses, personnel, and management associated with activities under that license. The Annual Report will also include an Annual Management Plan documenting planned management for the succeeding year.
MDC must obtain approval, in writing, from the USACE before any pesticides or herbicides are applied; and will provide a detailed list of those chemicals used.
More detailed information can be obtained by referring to the License DACW 41-3-09-0201.
- B. Federal Interest:** The Harry S. Truman Dam and Reservoir was authorized by the River and Harbor Flood Control Act of 1954 (Public Law 83-780) for flood control and conservation purposes.
- C. Easements on title:** There are 1287 separate tracts of land within the Missouri Department of Conservation license, making specific easements too numerous to include in this document. All real estate documents, including acquisition and easement documents are archived at the US Army Corps of Engineers, Real Estate Office, located at 601 East 12th, Kansas City, MO. Request for information concerning real estate documents should be directed to the Harry S. Truman Project Office, 15968 Truman Road, Warsaw, MO. 660-438-7317.
- D. Cultural Resources:** Yes, records are kept with the USACE, Kansas City District Cultural Resource Manager, and State Historical Preservation Office, SHPO. Managers should also coordinate with the MDC, Environmental Compliance Specialist, regarding cultural resources for the Kansas City Region.

- E. Hazards and hazardous materials:** There are no known man-made hazards on the lands under the license. Old homesteads continue to be uncovered occasionally; and typically feature physical hazards such as hand dug wells, drilled wells, and cisterns. These hazards will be marked and disposed of according to Missouri Department of Natural Resources specifications as they are found.
- 1) The Clinton Office has one chemical shed and one combination oil/chemical shed. These buildings contain pesticides, herbicides, paint, and petroleum products for our management work and facility and equipment maintenance. Pesticides and herbicides will be stored and used in accordance with label instructions and Federal Regulations.
 - 2) The Clinton Office also has a concrete containment facility that contains a 1000-gallon unleaded fuel tank, a 500-gallon diesel fuel tank, a 350-gallon spent-antifreeze container, and a 350-gallon spent-oil container. Outside propane storage for portable tanks is located on the southeast side of the concrete containment.
 - 3) A 1000-gallon propane tank used to heat the Clinton Office is located on site, east of the office.
- F. Endangered Species:** Yes, records kept in MDC Natural Heritage database.
- G. Boundary Issues:** Because the property is under a license and not owned by MDC, the Department has no issues with the boundary per se. Related issues are defined by encroachment problems that interfere with management activities, or pose an enforcement issue or trespass. These are either handled through our own agents or passed on to the USACE for enforcement and resolution.

MANAGEMENT CONSIDERATION

The primary management goal is to provide high quality habitat for wildlife and aquatic species and communities indigenous to the area surrounding Harry S. Truman Reservoir, while creating opportunities for quality experiences for area users. Efforts will be focused on areas that provide the highest resource benefits and which lay above 720' elevation.

V. Terrestrial Resource Management Considerations

The goal is to maintain and develop existing habitat communities, adding wildlife values through active management as allowed by budget, manpower, Ag Crop program and other variables. These efforts will be achieved through practices that may include, but are not limited to:

- 1) Management of warm season plantings
- 2) Forest management (TSI, burning, harvesting, etc.)

- 3) Conversion of crop fields and successional cool season grass lands to more wildlife friendly mixes
- 4) Share-cropping & cash-leasing
- 5) Food plots
- 6) Prescribed burning
- 7) Mowing
- 8) Disking
- 9) Other practices as they become understood and available for use

In an effort to provide wildlife with high energy cereal grains and suitable vegetative conditions, management staff develops annual Ag. Crop contracts with local farmers. These contracts apply to tracts across 12 wildlife management areas on licensed lands; and closely adhere to the soil and water plans that have been developed in cooperation with the United States Department of Agriculture (USDA) Natural Resource Conservation Service (NRCS) for all agricultural areas in the Harry S. Truman Reservoir. Area cropping permits follow NRCS plans closely to assure soil conservation, sound crop rotations, and desirable wildlife habitat. In some of the small isolated fields that are impractical to address with crop permits, annual food plots are planted by Department personnel.

Forest management is planned and performed to provide wildlife habitat and sustainable, healthy forests using Forestry Division guidelines as outlined in the Forest Land Action Guide (FLAG) and Area and Resource Management policies. The forest resource in each WMA is evaluated every 15 years, as outlined in the Forest Inventory Schedule. Resultant management prescriptions may involve income-generating activities, such as the harvest of forest products or firewood. When income is generated by the sale of forest products, MDC foresters adhere to the Department's State Land Timber Sales Procedures, including the use of Best Management Practices (BMPs) as prescribed in the Missouri Watershed Protection Practices to protect soil and water quality. Other forest management prescriptions may include non-income generating activities such as forest thinning, tree planting, and post-harvest treatments.

A portion of our management will, of necessity, be dedicated to controlling nuisance and exotic species in terrestrial communities. Feral hogs, Sericia Lespedeza, and Japanese Honeysuckle are a few of the species that currently pose a problem. Other exotics will be addressed if they show up in the terrestrial communities.

Challenges and Opportunities:

- 1) Maintain ground nesting bird habitat: nesting and brood-rearing
- 2) Native prairie remnant management
- 3) Wetland opportunities
- 4) Dove management
- 5) Glade & woodland restoration and management

6) Control of invasive species

Management Objective 1: Wildlife staff will provide optimum habitat for ground nesting birds.

Strategy 1: Use fire, mechanical practices and herbicides to restore and maintain top quality habitat for ground nesting birds.

Management Objective 2: Wildlife staff will reclaim and restore native prairie remnants.

Strategy 1: Use fire, mechanical methods and herbicides to restore and maintain remnant prairies.

Management Objective 3: Wildlife staff will enhance wetland opportunities.

Strategy 1: Use fire, mechanical, herbicides, Ag. Crop program, construction and water manipulation to provide for an optimum spectrum of wetland birds.

Management Objective 4: Wildlife staff will provide dove hunting opportunities on an annual basis.

Strategy 1: Provide food plots through department personnel and/or permittee farmers to support dove hunting recreational opportunities.

Management Objective 5: Wildlife and Forestry staff will manage and /or restore glade and woodland communities.

Strategy 1: Use appropriate silvicultural practices and prescribed fire to restore glade and woodland communities.

Strategy 2: Follow the Forest Land Management Guidelines and Area Resource Management policies and evaluate each WMA every 15 years.

Management Objective 6: Wildlife and Forestry staff will work on the management, control and reduction of invasive species annually, to the extent allowable by time, weather, manpower and budget constraints.

Strategy 1: Use fire, mechanical controls, and herbicides to reduce herbaceous and woody invasive species.

Strategy 2: Participate in coordinated efforts between State and Federal agencies and local landowners to control feral hog populations in and around Harry S. Truman Reservoir.

VI. Aquatic Resource Management Considerations

Management of the fisheries resource is planned and performed to provide and protect healthy watersheds and streams in accordance with MDC's Watershed and Stream Management.

The wildlife areas of Truman Reservoir are located within the Osage River watershed in West Central Missouri. Water resources include Truman Reservoir (Harry S. Truman Reservoir Management Plan, 1989), four perennial rivers, and numerous perennial and intermittent smaller tributary streams, springs, numerous man-made ponds, and strip pits. The Osage, Sac, South Grand, and Pomme de Terre rivers are the primary flowing waters that run through the wildlife areas and into Truman Reservoir. Other significant tributaries include Tebo and Little Tebo creeks, Deepwater Creek, Little Pomme de Terre River, and Weaubleau Creek. Numerous smaller tributaries are found within wildlife areas.

Width of the stream corridor is critical in ensuring that the functions and benefits of riparian corridors are realized. The stream corridor width should be contiguous with the natural community area adjacent to the stream, assuming that minimum widths will be maintained. A primary goal is to maintain or establish a stream corridor width in non-forested areas with a minimum of 50 feet from the top of the bank on each side for stream orders one and two (intermittent streams with or without permanent pools). Other width minimums can be considered on a case-by-case basis, with the provision that stream corridor functions are met. On 3rd order streams or larger, a corridor of 100 feet from the top of bank should be maintained or established in non-forested areas. Wider corridor widths may be necessary on large or unstable streams, and other width minimums can be considered on a case-by-case basis, provided that the stream corridor functions are met.

Exotic species of aquatic concern include zebra mussels and Asian carp, including bighead, silver, and grass carp. Zebra mussels have been found in Lake of the Ozarks, and more recently in Kansas in Melvern Reservoir, an impoundment located within the Osage River watershed. The potential for zebra mussels to be spread via boats and migration from the Osage River are a major concern. Grass carp are present in Truman Reservoir and MDC has received recent reports of silver carp, though these remain unconfirmed at this time. Signs have been posted on management lands outlining concerns and preventative measures to reduce the likelihood for introduction and spread of these species

Challenges and Opportunities

- 1) Maintain and protect healthy watersheds
- 2) Manage and restore adequate stream corridors
- 3) Education regarding identification and control of invasive species

Management Objective 1: Wildlife and Fisheries staff will maintain and protect healthy watersheds by implementing best management practices.

Strategy 1: Follow the Watershed and Stream Management Guidelines and Resource Policy Manual, to ensure that all Ag Crop permits and management activities adhere to Best Management Practices.

Management Objective 2: Wildlife and Fisheries staff will maintain or restore adequate stream corridors on area streams.

Strategy 1: Use planting and/or natural regeneration to provide appropriate stream corridor widths adjacent to management practices and Ag. Crop areas.

Management Objective 3: Wildlife and Fisheries staff will control and reduce invasive species.

Strategy 1: Provide and post educational material about the prevention and spread of invasive aquatic plants and animals.

VII. Public Use Management Considerations

MDC manages 58,133 acres of the 109,289 acres surrounding Harry S. Truman Reservoir. Countless opportunities are available to area users from hunting and fishing to hiking and bird-watching. Five areas have portions open to Special Use Permits for disabled users. Youth dove hunts are a perennial part of the dove management program.

The Clinton Office area, while closed to hunting, offers hiking trails and fishing opportunities. A portion of the Grand River Bottoms WMA adjacent to the Clinton Office has special regulations prohibiting the use of firearms as follows: “firearms firing single projectiles are prohibited, except for managed hunts and except that furbearers treed with the aid of dogs may be taken with a .22 rim fire or smaller caliber firearm.”

The Golden Valley Shooting Range consists of 25, 50, and 100-yard shooting stations with covered firing lines. It is completely accessible for persons with disabilities. On the north end of the range, an eight-station 50-yard open range is available for Law Enforcement and Organized Educational Groups by Special Use Permit only. A single pit toilet is available for area users. A trap shooting area is also available for those who bring their own portable clay bird throwers. The range is closed on Wednesdays for maintenance, with the exception of authorized groups who obtain a special use permit. A danger zone is posted around the perimeter of the range.

The Golden Valley Archery Range follows the standards set by the National Field Archery Association (NFAA). The 14 station walk-through range is open for public use from sunrise to sunset and is available for group use through a special use permit. A danger zone is posted around the perimeter of the range.

The only camping offered, other than USACE developed campgrounds is at the Cross Timbers Access area.

Twelve ponds are managed for sustainable fisheries and receive periodic supplemental stocking of channel catfish. Managed ponds are shown on Area Brochures. There are numerous ponds and strip pits that are not actively managed as most are within the flood pool of Truman Reservoir and provide fishing opportunities as fish from Truman Reservoir move into them. The west pond located at the Clinton Site receives annual stockings of hybrid sunfish and channel catfish and is closed to the public by posting from stocking dates thru July 1st. During this time fishing is limited to scheduled organized groups that may make reservations by contacting the Clinton Office. All ponds and strip pits fall under statewide fishing regulations unless they become connected to Truman Reservoir, at which time they fall under reservoir regulations.

Areas provide access to fishing on Truman Reservoir and area streams. With the exception of paddlefish, statewide stream fishing regulations apply for all other fish upstream of lake boundaries. Lake boundaries are shown on all area brochures. Paddlefish regulations apply to Truman Reservoir and its tributaries.

Enforcement considerations include keeping the areas safe for all area users, investigating violations of area regulations and state laws, and reducing misuse of the areas through routine patrols and education.

Challenges and Opportunities

- 1) Enhance public opportunities.
- 2) Provide Areas for Disabled Users.
- 3) Continue Youth Dove Hunts
- 4) Maintain Services at Clinton Office
- 5) Maintain Golden Valley Archery and Shooting Ranges
- 6) Provide Areas for Public Fishing
- 7) Provide Enforcement and Educational opportunities

Management Objective 1: Continue to provide good quality areas for the public to use.

Strategy 1: Use budget dollars and equipment to maintain areas.

Management Objective 2: Provide five areas for hunters with disabilities to use and one area for anglers with disabilities.

Strategy 1: Continue to improve on the quality and accessibility of these five units to hunters with disabilities.

Strategy 2: Develop fishing areas accessible to anglers with disabilities at the Clinton Site pond.

Management Objective 3: Promote youth hunts.

Strategy 1: Provide sunflower fields or alternative fields for Outdoor Skills Specialist personnel to use for youth dove hunt or special hunts.

Management Objective 4: Opportunities around the Clinton Office.

Strategy 1: Continue annual fish-stocking to promote fishing to educational and other groups.

Strategy 2: Continue to maintain hiking trails.

Strategy 3: Continue to provide a public service office.

Management Objective 5: Golden Valley Archery and Shooting Range.

Strategy 1: Provide a safe area for archery enthusiasts to practice.

Strategy 2: Provide a safe and clean place for area users to practice sighting in their firearms.

Strategy 3: Provide a location for Law Enforcement to meet gun-use qualification requirements.

Strategy 4: Provide a location for Supervised Group Use.

Management Objectives 6: Continue with fish stocking program.

Strategy 1: Periodically sample fish populations and stock channel catfish in area ponds.

Strategy 2: Manage aquatic vegetation by planting desirable vegetation and monitoring and controlling nuisance vegetation.

Management Objective 7: Enforcement efforts.

Strategy 1: Provide enforcement of area regulations and state laws through routine patrols, surveillance of abused areas, and investigations of violations.

Strategy 2: Educate the public about the areas' regulations and violations through radio programs, news articles, and one-on-one area user contacts. Incorporate Operation Game Thief and Operation Forest Arson as additional avenues for reporting violations.

VIII. Administrative Considerations

Land Acquisition

Management lands are owned by the USACE and no acquisition boundary has been established for MDC. License boundary will be signed with MDC regulated signs and monitored for encroachments.

MANAGEMENT TIMETABLE

All strategies for this management plan are considered ongoing.

APPENDICES

Area Background:

The Harry S. Truman Dam and Reservoir was authorized by the River and Harbor Flood Control Act of 1954 (Public Law 83-780) for flood control and conservation purposes. The River and Harbor Flood Control Act of 1962 (Public Law 87-874) added hydropower, recreation and fish and wildlife as project purposes, in accordance with the recommendation of the Chief of Engineers in House Document 578, Eight-seventh Congress. The water resource project was named Kaysinger Bluff Dam and Reservoir at the time of authorization. It was renamed Harry S. Truman Dam and Reservoir in 1970 by Public Law 91-267.

In accordance with the Fish and Wildlife Coordination Act of 1958 (Public Law 85-924) and the Kaysinger Bluff Dam and Reservoir, Osage River Basin, Missouri, Fish and Wildlife Conservation Report dated the 26 of March 1965, 31,997 acres were acquired for mitigation for fish and wildlife purposes. Of these 31,997 acres, 29,601 acres are licensed to the Missouri Department of Conservation for management.

The origin of MDC's involvement occurred through the mitigation of twelve areas totaling 29,601 acres, because the USACE was mandated to manage these areas for fish and wildlife. More information can be referenced from the H.S. Truman Master Plan Memorandum 36A located in the Harry S. Truman Project Office, 15968 Truman Road, Warsaw, MO.

Harry S. Truman Dam & Reservoir lands are rich in historical locations and events. It was only recently, in the early 2000s, that a Weaubleau-Osceola geological structure was verified as a 12-mile-diameter meteorite impact site which occurred during the Mississippian Period, and is recognized as the largest exposed impact crater in the United States. Archeological sites along the Pomme de Terre River have produced fossils of animals such as mastodon, musk ox, and giant beaver that roamed the basin during the Pleistocene Era. Osage Indians, for whom the Osage River was named, inhabited the area. The Osage River was a major trade route for river boats travelling into west-central Missouri. Among early Europeans to visit the area were the French explorers who influenced the naming of places and landmarks such as Pomme de Terre, Tebo, Marmaton, and Marais des Cygnes. Later on, the Civil War had great impact on many communities within the counties encompassing Truman Reservoir.

Current Land and Water Types

WILDLIFE MANAGEMENT AREA	STREAM (miles)	POND (acres)	CROP (acres)	FOREST WOOD LAND (acres)	OLD FIELD (acres)	NON- NATIVE GRASS LAND (acres)	NATIVE GRASS LAND (acres)	WET LAND (acres)	GLADE (acres)	TOTAL (acres)
Gallinipper Creek	5.5	2	47	1540	438			240		2265
Sac Osage	23		841	2312	990	470	120	627	15	5375
Salt Creek	12	3	177	2198	1264	76		357	80	4152
Valhalla	2			1226	399			73	67	1765
Cross Timbers	8	1	535	3698	428	40	46		68	4815
Little Pomme de Terre	3.5		271	1127	620			130	90	2238
Deepwater Creek	11	25.5	1560	916	2635	500		20		5631
Grand River Bottoms	13	11.5	1600	1600	4292	352		250		8094
Bethlehem	4.8	2.5	840	251	1891	218		65	80	3345
Upper Tebo Creek	12.7	1.5	1326	2000	4065	331		14		7736
Leesville		0.5	13	977	166	40	612			1808
Little Tebo Creek	2.2	0.5	233	666	669	60			80	1708
Brownington	1.8	11	300	250	690	152		36		1428
Cedar Creek				494				176		670
Brush Creek	2.5		61	1443	926	50			721	3201
Gough Eye	1			387		86		100		573
Weaubleau Creek	3	3	378	1428	781			514	35	3136
Tebo Island					193					193
Clinton Site		3								
Totals	106	65	8182	22513	20447	2375	778	2602	1236	58113
Percentage			14%	39%	35%	4%	1%	5%	2%	100%

Public Input Summary

The draft Truman Reservoir Management Lands Area Plan was available for a public comment period August 1-August 31, 2013. The Missouri Department of Conservation received comments from five respondents (Appendix A). The Truman Reservoir Management Lands Area Planning Team carefully reviewed and considered these ideas as they finalized this document. A brief summary of public input themes – including how they were incorporated or why they were not can be found below. Rather than respond to each individual comment, comments are lumped into general themes and are addressed collectively.

MDC responses to themes and issues identified through Truman Reservoir Management Lands public comment period

Concern that this is a strategic plan rather than an operational management plan.

By definition that is probably correct. Our goal was to give an overall plan for operation in a manageable time frame and not wrap our efforts into a more defined perimeter. Our operational plan or yearly work plan will be in the Annual COE report that we are required to hand in each year to the COE (mentioned in section IV A). Each work team will use the Truman Plan as a guide and step down our management from that document, which allows more flexibility to each manager. That is what we would call our annual work plan.

Support reviewing Truman Reservoir Management Lands Area Plan every five years (rather than 15 years).

The 15-year time frame (Overview page 2) was in line with Forestry Division's inventory schedule and each division believed it best to align their objectives with this schedule.

Support greater emphasis on natural community management.

One of the great challenges at Truman Lake is managing around the flood events. As outlined under Management Considerations (page 7), the majority of our efforts are going to be spent at an elevation that is not impacted by the flood events on Truman. These efforts outlined in Section V, "Terrestrial Resource Management Considerations", show a continued effort in natural community management. As outlined in Section V, restoration and enhancement of existing natural communities is part of the overall picture.

Support greater emphasis on restoring native grasslands and wetlands and less of an emphasis on managing glades and woodlands.

As stated above we will work on those areas that are not subject to prolonged inundation and lend themselves to improved resource management. Our hope is to be able to address all the terrestrial habitats that we manage. We recognize the importance of native grasslands, wetlands, glades, and woodlands. These different habitats all reflect different niches for a wide variety of species. We will continue to use fire, chemical, mechanical methods to promote existing natives in those areas around

Truman. In 2006, we were mandated to reduce our efforts on Truman lands by 50%. As managers we have selected and concentrated on those areas that will allow us to be the most effective with the resources we have to work with.

Support managed grazing as a wildlife management tool on Truman Reservoir Management Lands.

While the planning team realizes the importance of grazing as a management tool, we are not in a position to pursue that option. We would have to make significant improvements to the existing infrastructure to put any cattle on Truman.

Continue support for dove hunting opportunities.

We will continue with the dove management on Truman. We use permittee farmers and MDC personnel to manage the fields we currently use. We will investigate ways to improve and continue to provide opportunities for area users. Introducing youth to the shooting sports is an important part of our program. We will continue to work with our Outreach and Education Division to promote youth.

Would it be possible to add a good quality ADA accessible waterfowl hunting blind?

We do not have any plans to add a waterfowl hunting blind to the Truman Management Lands. We do offer opportunities on several of our waterfowl management areas within the Kansas City Region, that include Montrose, Schell-Osage, and Four Rivers Conservation Areas and all offer ADA approved blinds.

Would it be possible to allow non-motorized wheeled vehicles on interior roads and paths?

Currently, bicycles are allowed on any road open to vehicular traffic (roads and parking lots open to the public) Having these areas open to this activity increases the potential of interference with existing area uses. While the planning team understands a desire by some to allow this activity, there are no plans for changing the regulation to permit non-motorized wheeled vehicles on the interior roads and paths.

Would it be possible to change target backgrounds more often at Golden Valley Range?

We have an individual that is contracted out to perform maintenance on the range every Wednesday. Part of the contract states that he is supposed to change them out as they become worn. We will try and be more adamant about checking them as we do our inspection of the range. Thank you for bringing that to our attention. If you have any other concerns, please feel free to call the number posted inside the shelters at the range.

References and Documents:

United States Department of the Army-Corps of Engineers. (1983). Department of the Army License for Fish and Wildlife, Forest Management, and Timber and Crop Activities on Harry S. Truman Dam & Reservoir Benton, Henry, Hickory, & St. Clair Counties, Missouri (DACW 41-3-83-18).

United States Department of the Army-Corps of Engineers. (1983). Department of the Army License for Fish and Wildlife, Forest Management, and Timber and Crop Activities on Harry S. Truman Dam & Reservoir Benton, Henry, Hickory, & St. Clair Counties, Missouri (DACW 41-3-09-0201).

Young, Dave 2012 (Retired Regional Supervisor for Truman Management Lands)

Missouri Natural Heritage Database records; mdc.mo.gov/landwater-care/heritage-program

River and Harbor Flood Control Act 1954, Public Law 780-83rd Congress. Chapter 1264-2nd Session HR 9859. <http://planning.usace.army.mil/toolbox/library/PL/RHA1954.pdf>

Easements: All real estate documents, including acquisition and easement documents are held at the US Army Corps of Engineers, Real Estate Office, located at 601 East 12th, Kansas City, MO. Request for information concerning real estate documents should be directed to the Harry S. Truman Project Office, 15968 Truman Road, Warsaw, MO., 660-438-7317.

SHPO, State Historic Preservation Office (SHPO). Information may be obtained by writing the State Historic Preservation Office at P.O. Box 176, Jefferson City, MO 65102; or by calling 800-361-4827 or 573-751-7858

Rules of Department of Natural Resources Division 23-Division of Geology and Land Survey Chapter 3-Well Construction Code. Missouri Well Construction Rules 10 CSR 23-3.110 page 37-49.

USDA-NRCS Service Center 1306 N 2nd St Clinton, MO 64735 660-885-5567 (Henry, portion of Benton and St. Clair County).

USDA-NRCS Service Center 688 State Hwy 8 Suite 500 Springfield, MO 65802 417-831-5246 (Hickory and portions of Benton and St. Clair County).

Forest Land Action Guide (FLAG)

<http://mdc4.mdc.mo.gov/applications/MDCLibrary/MDCLibrary2.aspx?NodeID=2335>

Forest Inventory Schedule. Requests for information concerning Forest Inventory Schedules may be directed to the Forestry Regional Supervisor at the MDC Kansas City Regional Office, Lee's Summit, MO.

Missouri Department Conservation State Land Timber Sale Procedures. MDC. Requests for information concerning MDC State Timber Sale Procedures may be directed to the Forestry Regional Supervisor at the MDC Kansas City Regional Office, Lee's Summit, MO.

Missouri Department of Conservation (2009) Watershed and Stream Management Guidelines. MDC. Requests for information concerning MDC watershed and stream management may be directed to Fisheries Regional Supervisor at the MDC Kansas City Regional Office, Lee's Summit, MO.

Harry S. Truman Reservoir Management Plan (1989). Requests for information concerning Fisheries Management within Harry S. Truman Reservoir may be directed to the Fisheries Regional Supervisor at the MDC Kansas City Regional Office, Lee's Summit, MO.

National Field Archery Association (1995) *Archery and Bowhunter Range Guidelines*; <http://nfaa-archery.org/field/info.cfm> See "General information".

Harry S. Truman name change from Kaysinger Bluff (1970) Public Law 91-267
[http://en.wikipedia.org/wiki/Truman Reservoir](http://en.wikipedia.org/wiki/Truman_Reservoir)

Fish and Wildlife Coordination Act of 1958, Public Law 85-624
<http://www.usbr.gov/power/legislation/fwca.pdf>
U.S.C. Title 16-Conservation
Chapter 5A-Protection and Conservation of Wildlife
Subchapter 1-Game, Fur-Bearing Animals, and Fish

Harry S. Truman Master Plan Memorandum 36A Request for information concerning documents should be directed to the Harry S. Truman Project Office, 15968 Truman Road, Warsaw, MO. 660-438-7317.

Fish and Wildlife Coordination Act of 1958 (Public Law 85-924).

Gilmore, Tammy 2012. Supv. Natural Resource Manager, US Army Corps of Engineers, Warsaw, MO.

MDC Resource Policy Manual. MDC.

Rules of Missouri Department of Natural Resources, *Missouri Code of State Regulations*, 10 CSR 23-3.110.

United States Department of the Army-Corps of Engineers. (1983). *Department of the Army License for Fish and Wildlife, Forest Management, and Timber and Crop Activities on Harry S. Truman Dam & Reservoir Benton, Henry, Hickory, & St. Clair Counties, Missouri* (DACW 41-3-83-18).

Other pertinent information can be gathered from previous area plans developed under License number DACW 41-3-83-18. These plans are archived at the Clinton and El Dorado Springs Offices.

Additional Appendices:

Appendix A. Draft Truman Reservoir Management Lands Area Plan Public Comments

Maps:

- Figure 1: Area Map Clinton Office
- Figure 2: Area Map Bethlehem to Grand River Bottoms
- Figure 3: Area Map Brush Creek to Upper Tebo Creek
- Figure 4: Aerial Map Gallinipper Creek WMA
- Figure 5: Aerial Map Sac-Osage WMA
- Figure 6: Aerial Map Salt Creek WMA
- Figure 7: Aerial Valhalla WMA
- Figure 8: Aerial Cross TimbersWMA
- Figure 9: Aerial Little Pomme de Terre WMA
- Figure 10: Aerial Deepwater WMA
- Figure 11: Aerial Grand River Bottoms WMA
- Figure 12: Aerial Bethlehem WMA
- Figure 13: Aerial Upper Tebo WMA
- Figure 14:Aerial Leesville WMA
- Figure 15: Aerial Little Tebo Creek WMA
- Figure 16: Aerial Brownington WMA
- Figure 17: Aerial Cedar Creek WMA
- Figure 18: Aerial Brush Creek WMA
- Figure 19: Aerial Gough Eye WMA
- Figure 20: Aerial Weaubleau WMA
- Figure 21: Aerial Tebo Islands WMA
- Figure 22: Aerial Clinton Office

Appendix A. Draft Truman Reservoir Management Lands Area Plan Public Comments

Received during public comment period (August 1-31, 2013).

First off, I want to commend you (MDC) for providing a clear and concise plan on what is going on in regards to area improvement. I, as well as most, think MDC does a wonderful job of providing resources for humans and wildlife alike. It is nice being kept abreast of what type of management plans are being set in place and the time-table.

I am an avid waterfowl hunter and I am also a below knee amputee. As much as I love waterfowl hunting, it is very difficult to navigate certain areas of a marsh with only one "good" leg. I was hoping there would be a plan to provide a decent* ADA accessible blind, like the ones that are present at select conservation areas across the state. I placed an asterik beside "decent", because I have hunted numerous ADA blinds at conservation areas and there are some good blinds, and terrible blinds. Placing the blind in a decent area with good cover is a must. I greatly appreciate when staff puts in all the hard work they do to create these blinds, but some are in terrible places and stick out terribly. In my opinion, a model blind is the one placed at Bob Brown conservation area. it is far enough away from the parking lot to not flare ducks, but accessible and hidden well.

I know this isn't at the top of the priority list for a management plan, but I wanted to provide you with a concern of many people. I work in the field of prosthetics and see it first hand, how many people have given up hunting/fishing/outdoor activities due to the lack of accessibility. Again, I appreciate all you all do to provide such great opportunities for Missouri citizens to enjoy the outdoors.

Thanks,
Ryan Cline

(Please excuse any grammatical or spelling errors. I did not have much time to type.)

I would like to see more of an emphasis on restoring and maintaining the native grasslands and wetlands and less of an emphasis on the glade/woodland areas. I also am very much in favor of coninuing to provide and improve dove hunting opportunities; especially for youth hunters.

The Plan is very generic without particular specifics, though I am sure that is by design. The Plan lacks any clear and definable, let alone documentable goals; it only outlines very generic terms, such as "maintain and develop". Without specific goals and objectives for which to measure against, what is the purpose of the exercise?

I believe a 15 year plan for the management of non forest lands is too long a term. I recognize the desire to synchronize with the Forest Plan, however on non forest lands succession and invasive species as just two examples can create situations beyond the point of no return or at such extreme cost it is not feasible to "reset", leading to the loss of quality habitat - particularly that of ground nesting birds, one of the identified concerns within the Plan. A 5 year review, with rewrite only if necessary would be more applicable with each third anniversary coinciding with the Forest Plan.

Regarding Terrestrial Resource Management Considerations:

There is no mention of managed grazing within the Plan. Though there is a statement allowing wiggle room: "Other practices as they become understood and available for use"; and it is entirely absent from Management Objectives. I know this is a hot topic which the "experts" cannot agree upon but believe there is recent research and ongoing research which supports managed grazing as a viable tool in wildlife management, even beneficial when compared to haying, which is commonly done on management lands.

There is no emphasis placed on natural community management aside from Management Objective 5 which can only be drawn by inference. If the Department is interested in long term economic benefit there is no better investment than in restoring and maintaining natural communities which provide superior food and cover throughout most of the year.

I believe the plan as-is, is more appropriately a strategic plan than a management plan. If it is to be a management plan it should contain specific, obtainable and measureable goals.

I would like non-motorized wheeled vehicles to be legal on interior roads and paths that are used by area workers to access the interior via trucks, tractors, etc.

I have read the stated area plan. It is well done. I am very impressed with how friendly, helpful and knowledgeable that Mrs. Hilty is at the Clinton office. She has provided me with a lot of great maps and information about the area. I started coming here 7 years ago and it is truly an extraordinary well-managed hunting area. The Golden Valley range is well used and maybe should have the target backgrounds changed before they get in such bad shape. Thanks for a great area for Missouri citizens.

Figure 1: Area Map Clinton Office

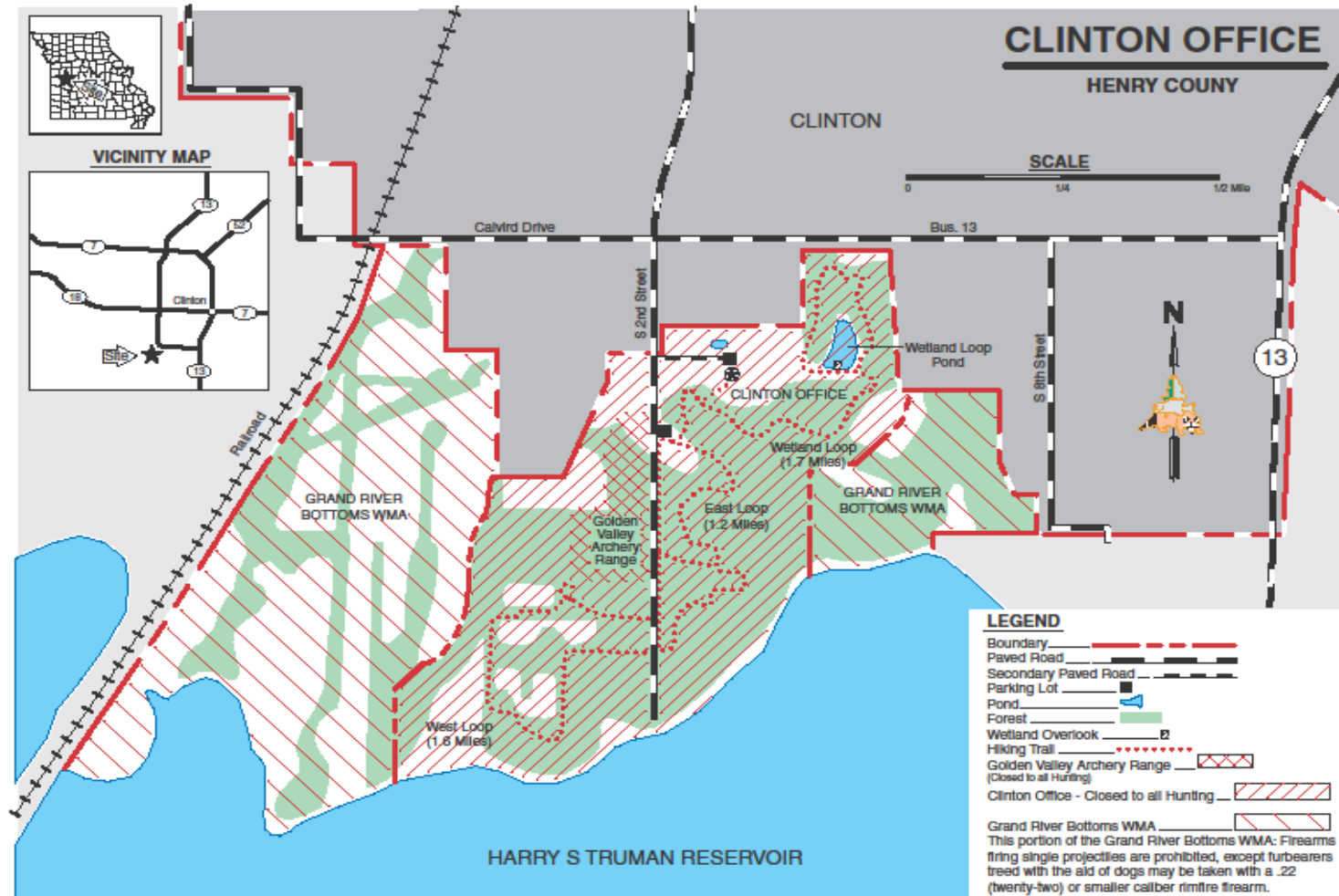


Figure 2: Area Map Bethlehem to Grand River Bottoms

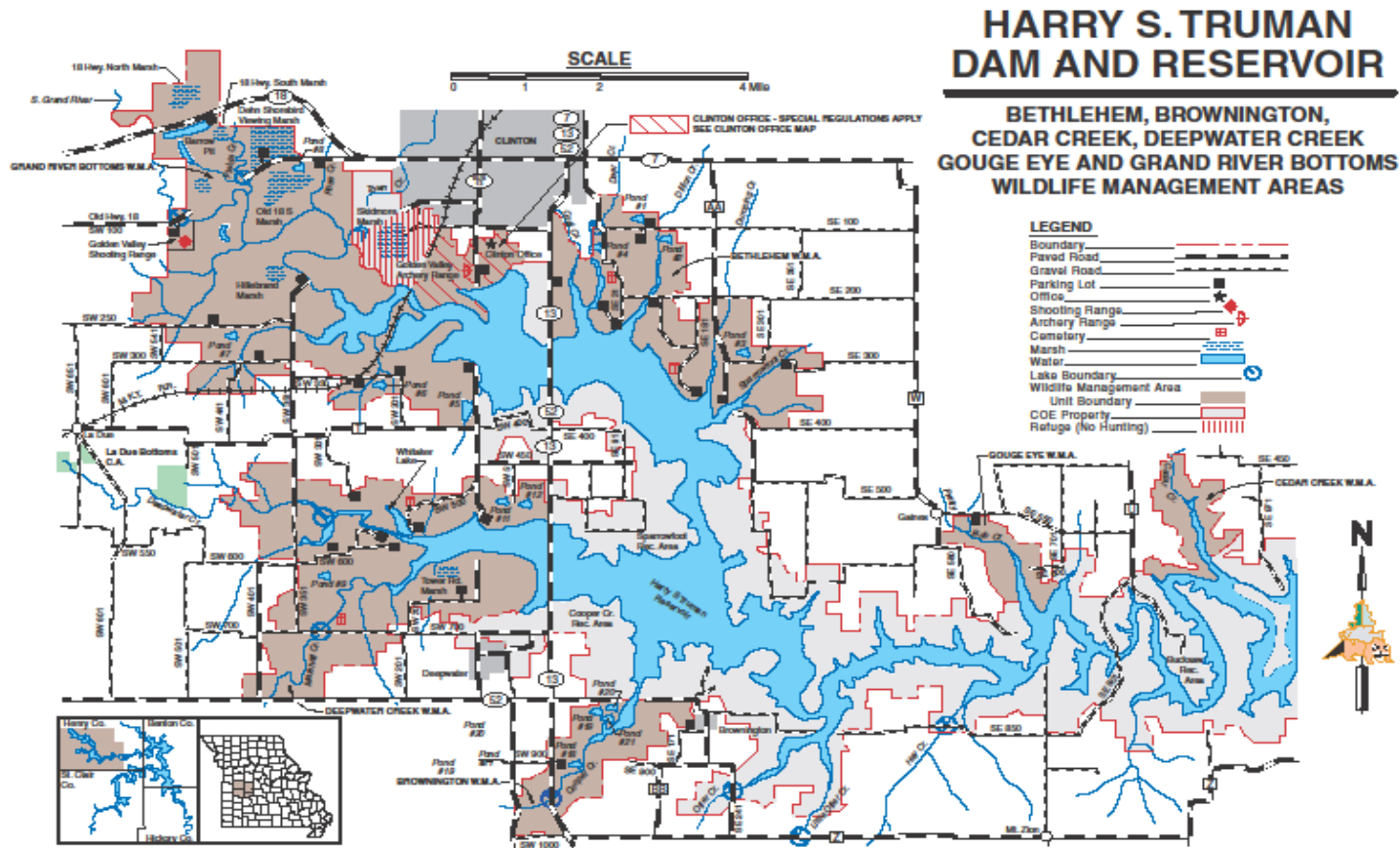


Figure 3: Area Map Brush Creek to Upper Tebo Creek

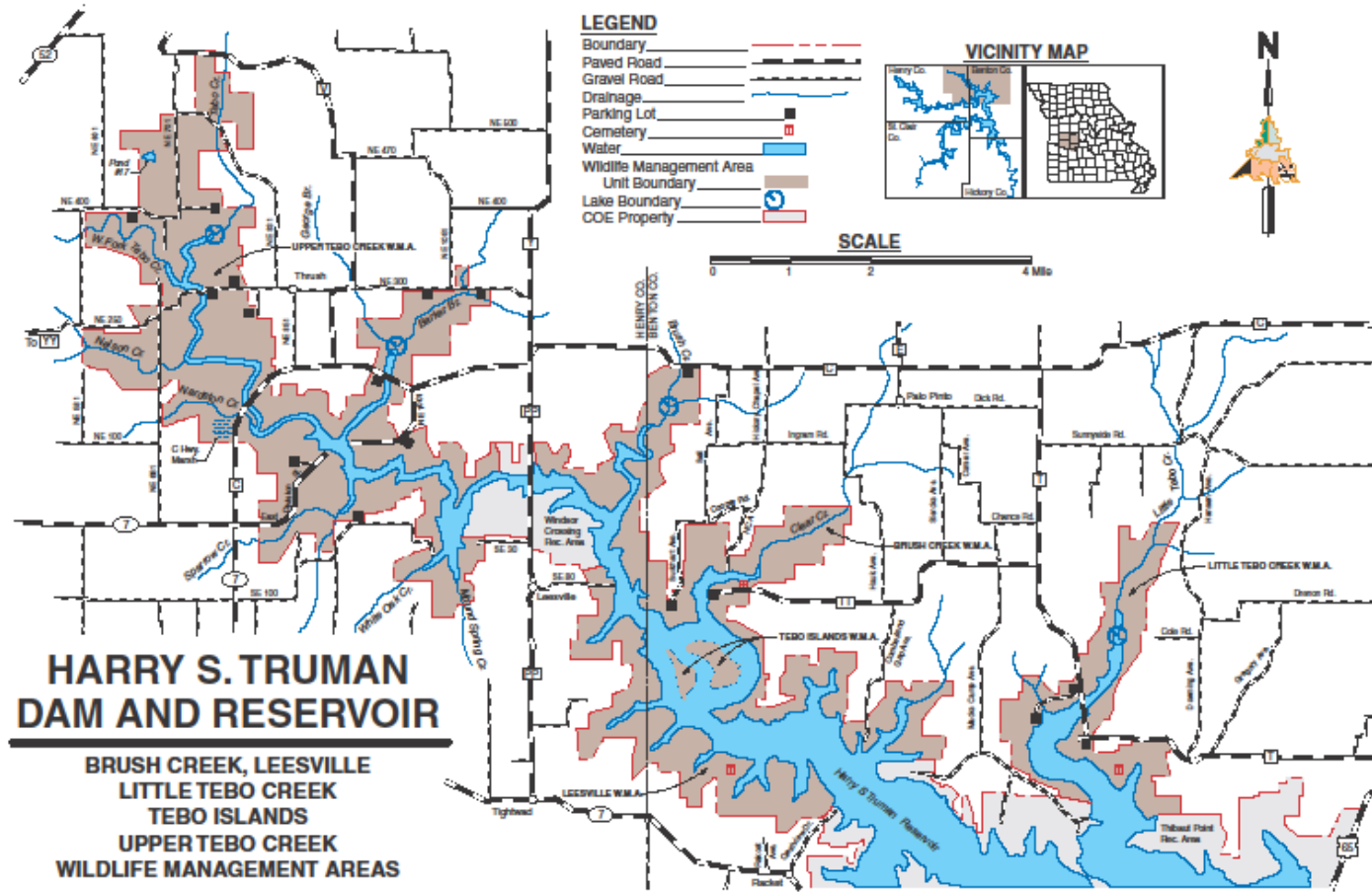


Figure 4: Aerial Map Gallinipper Creek WMA

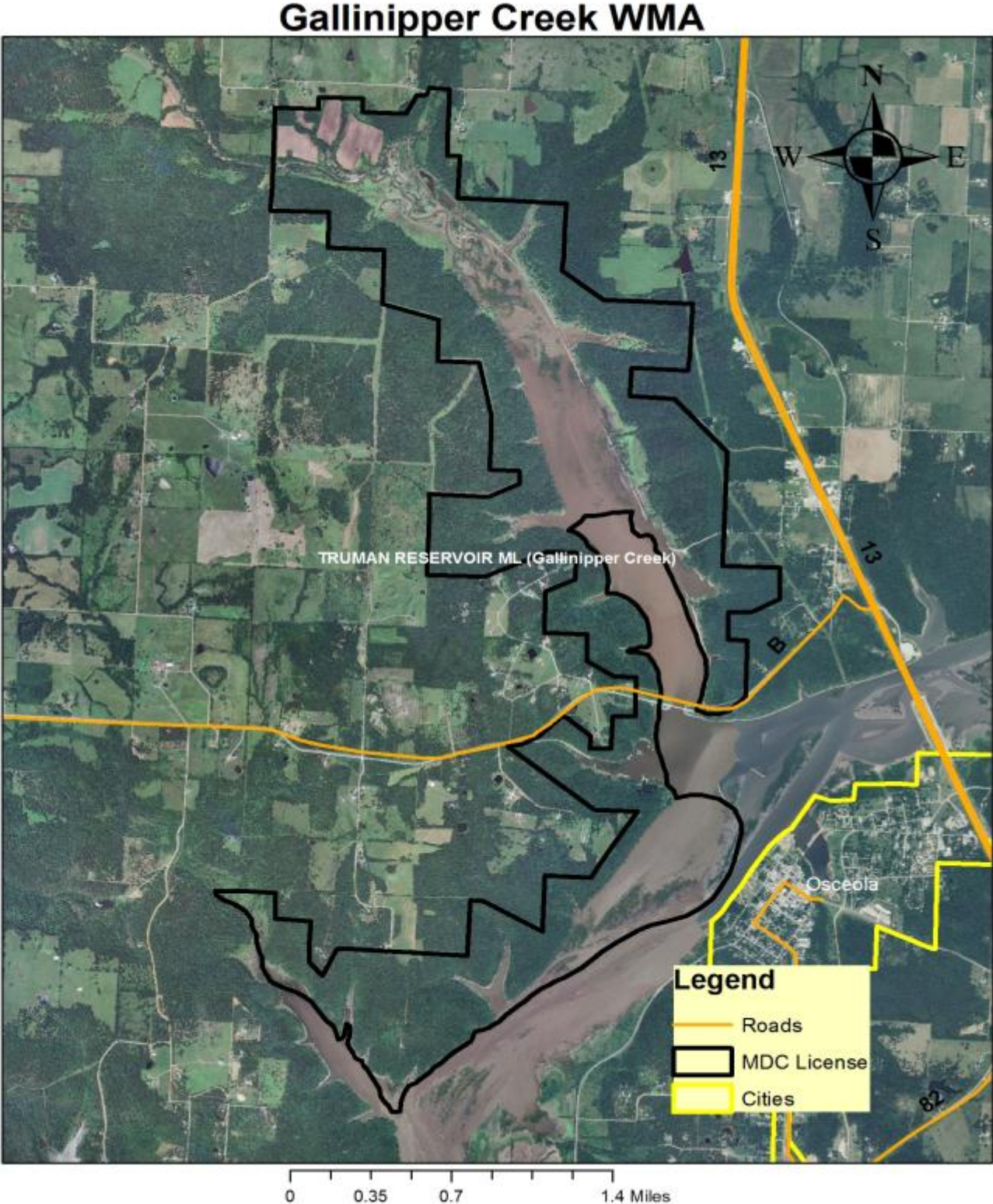


Figure 5: Aerial Map Sac-Osage WMA

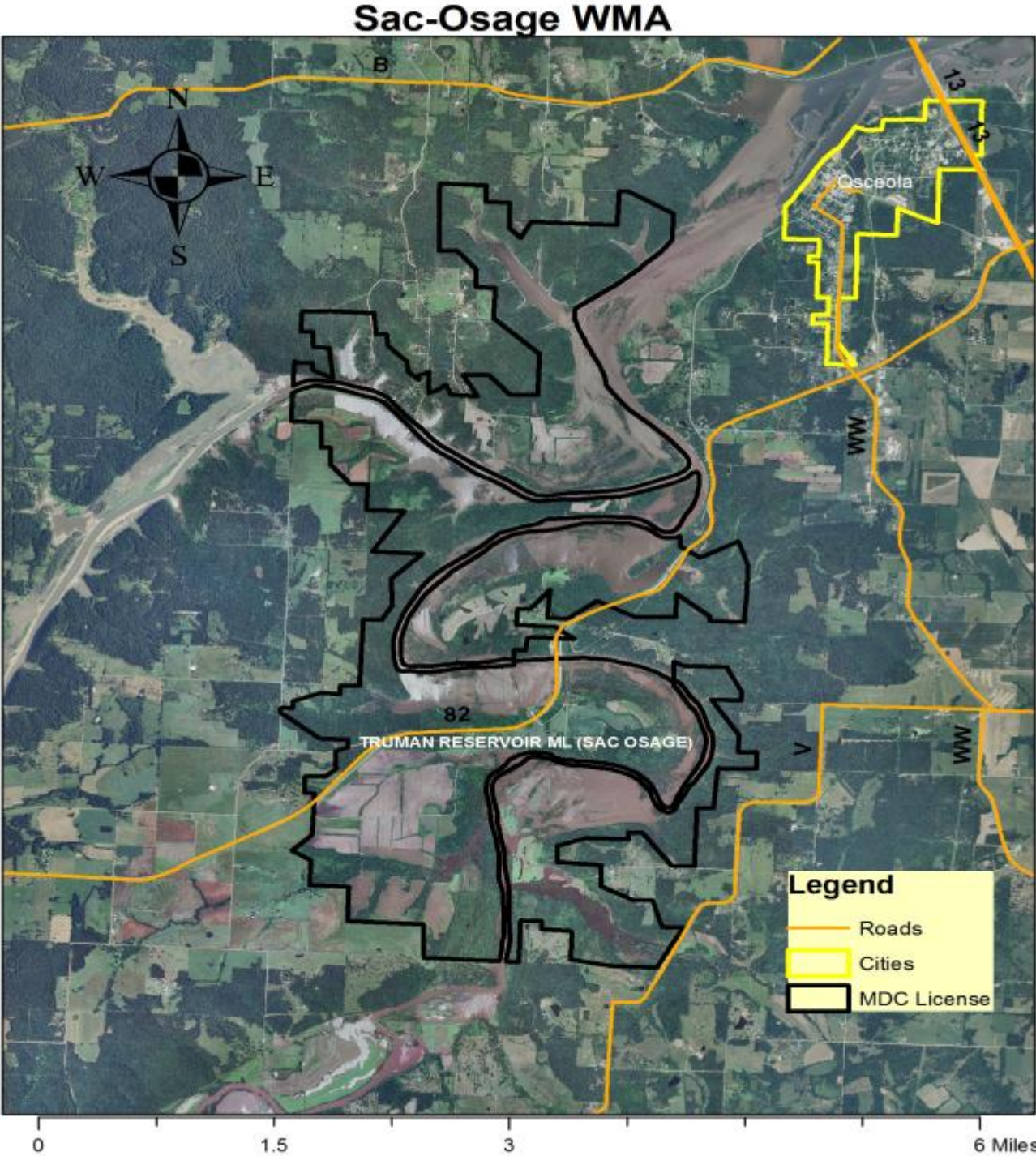


Figure 6: Aerial Map Salt Creek WMA

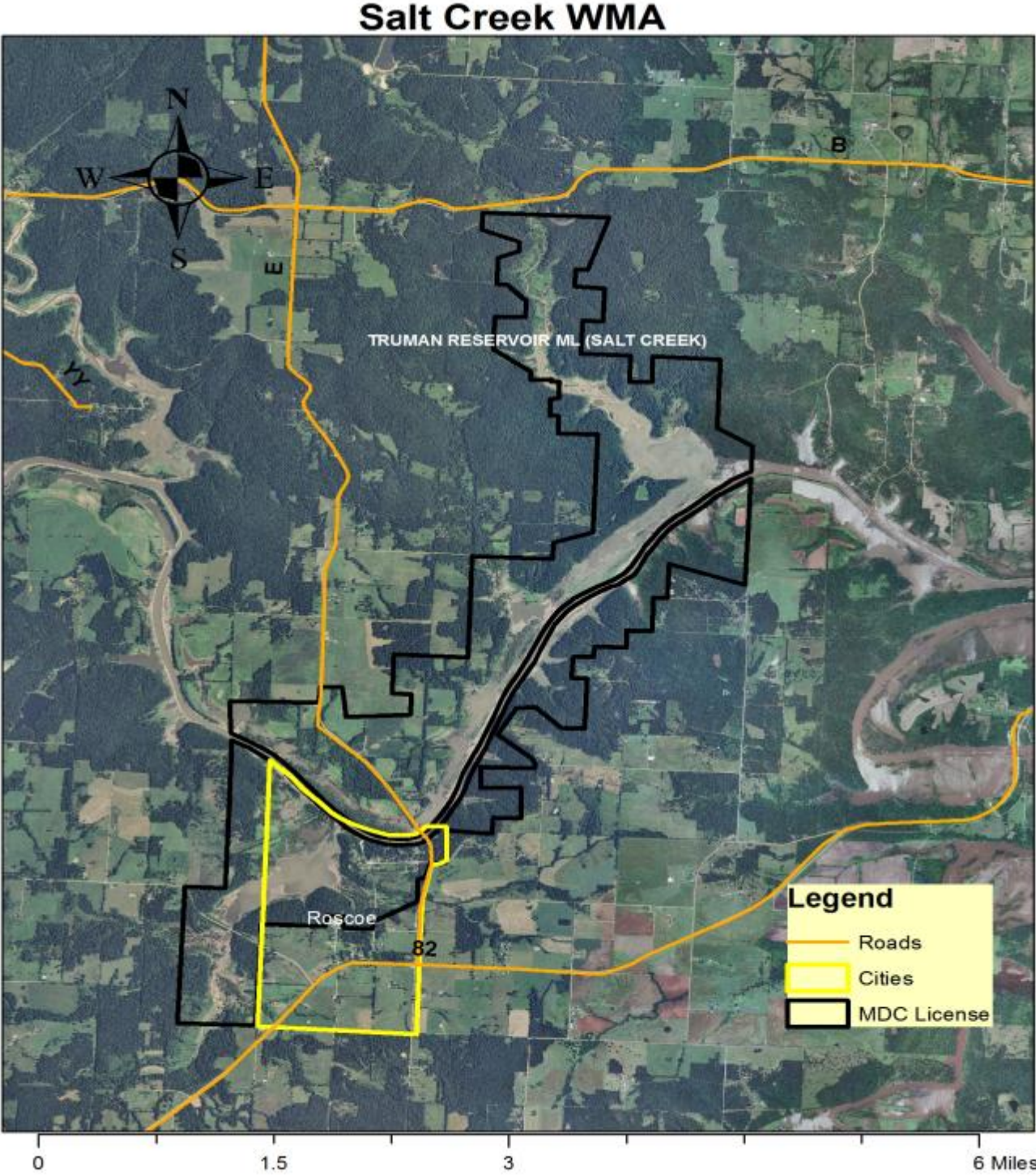


Figure 7: Aerial Map Valhalla WMA

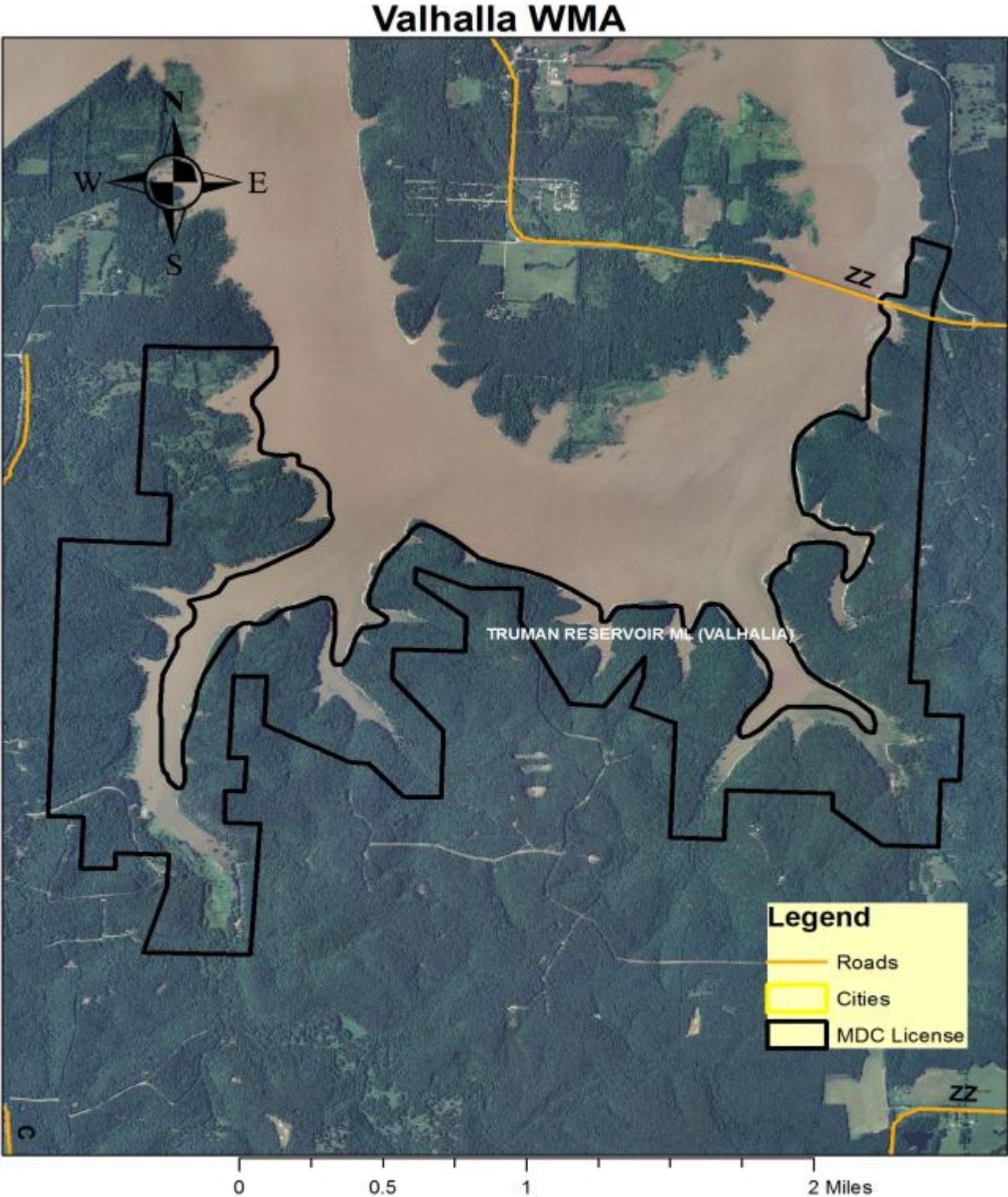


Figure 8: Aerial Map Cross Timbers WMA

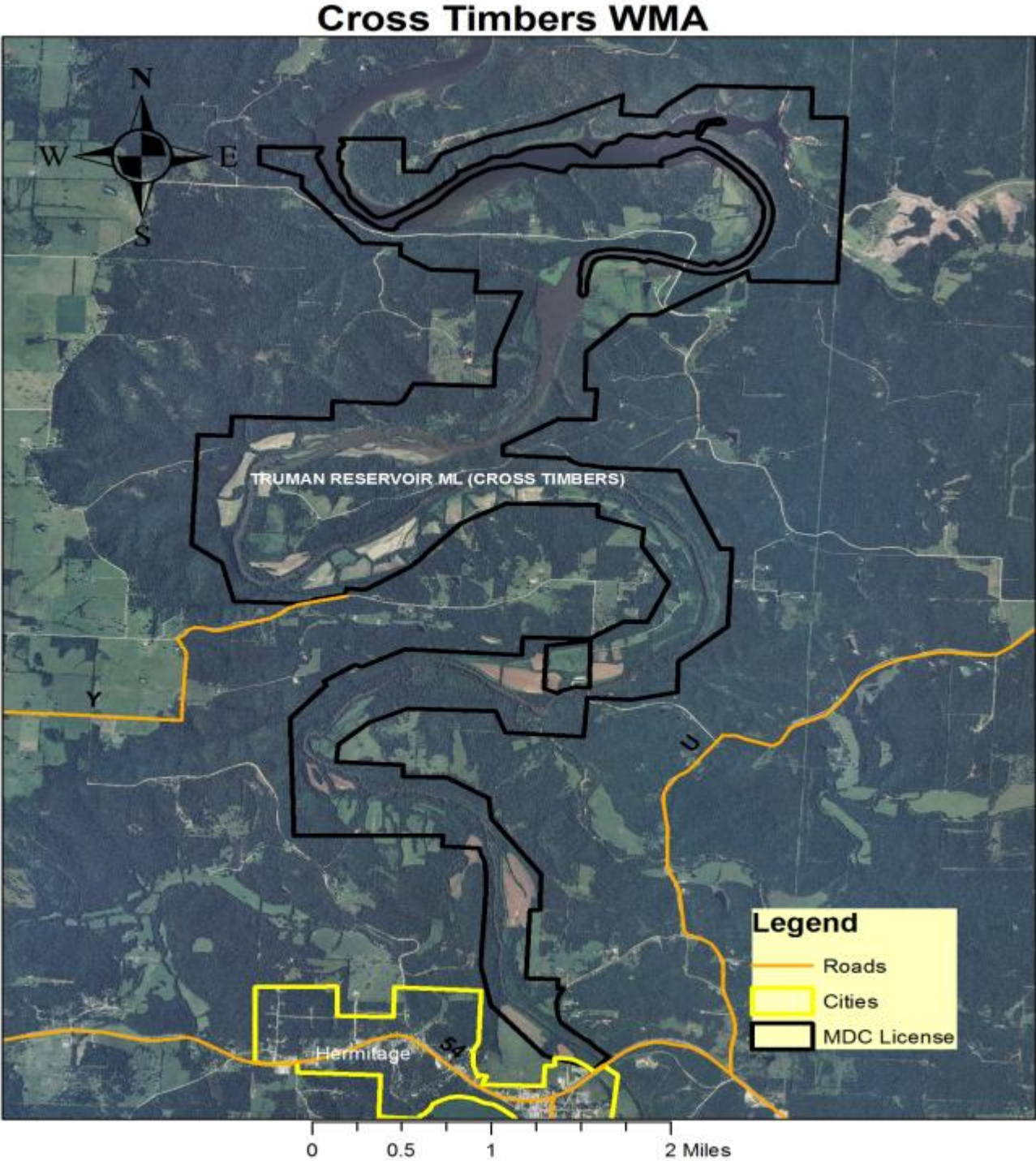


Figure 9: Aerial Map Little Pomme de Terre WMA

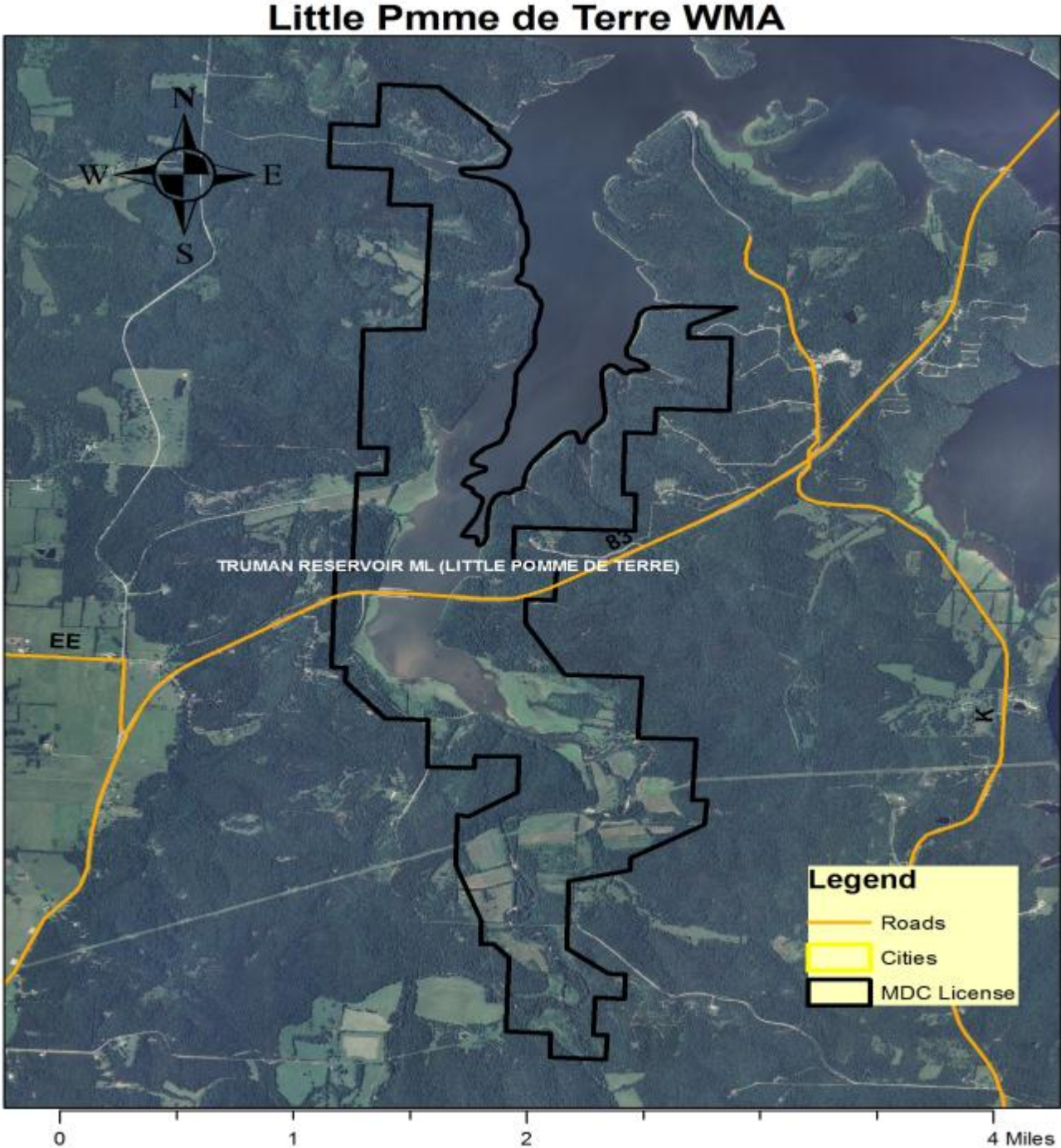


Figure 10: Aerial Deepwater Creek WMA

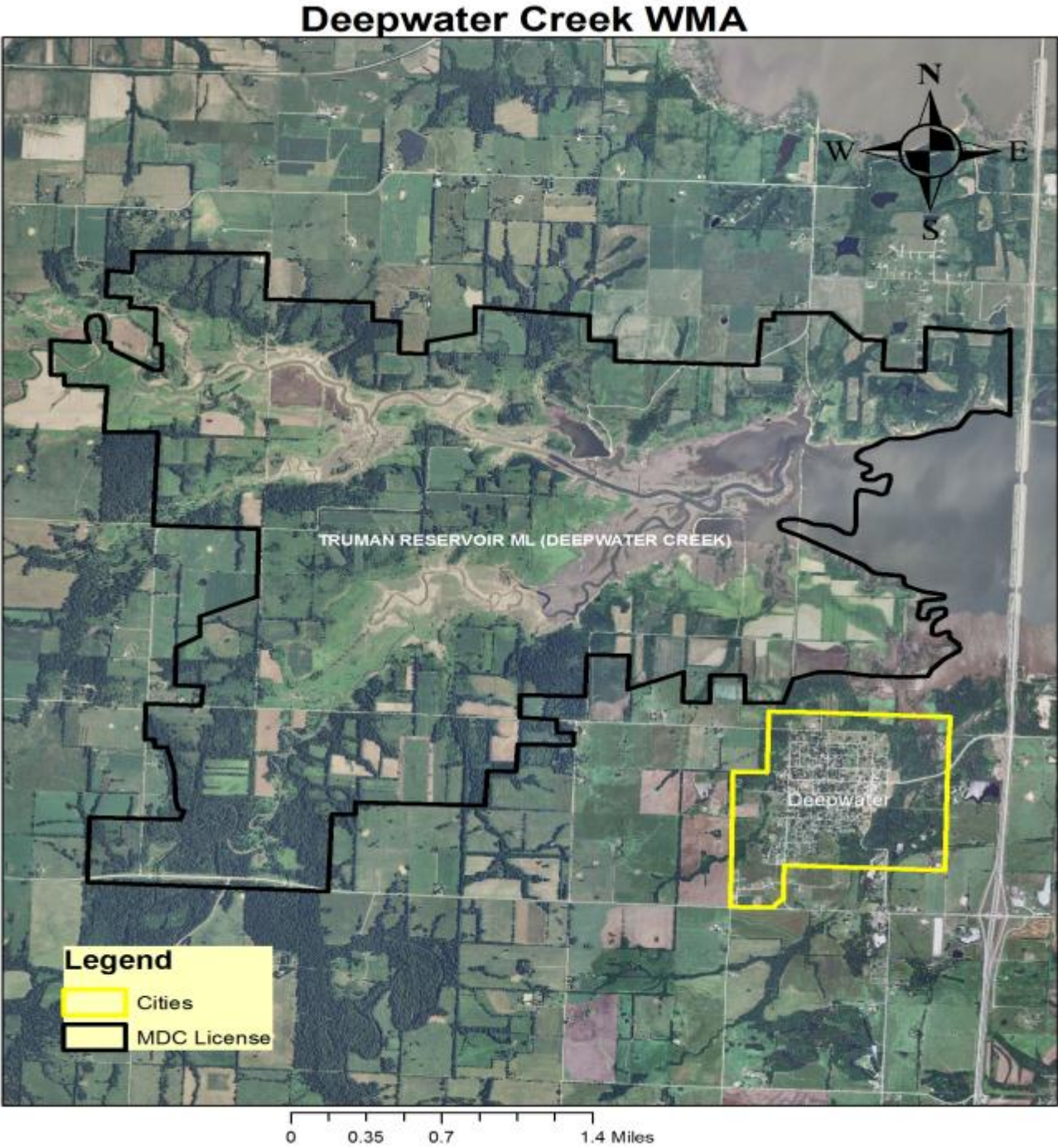


Figure 11: Aerial Grand River Bottoms WMA

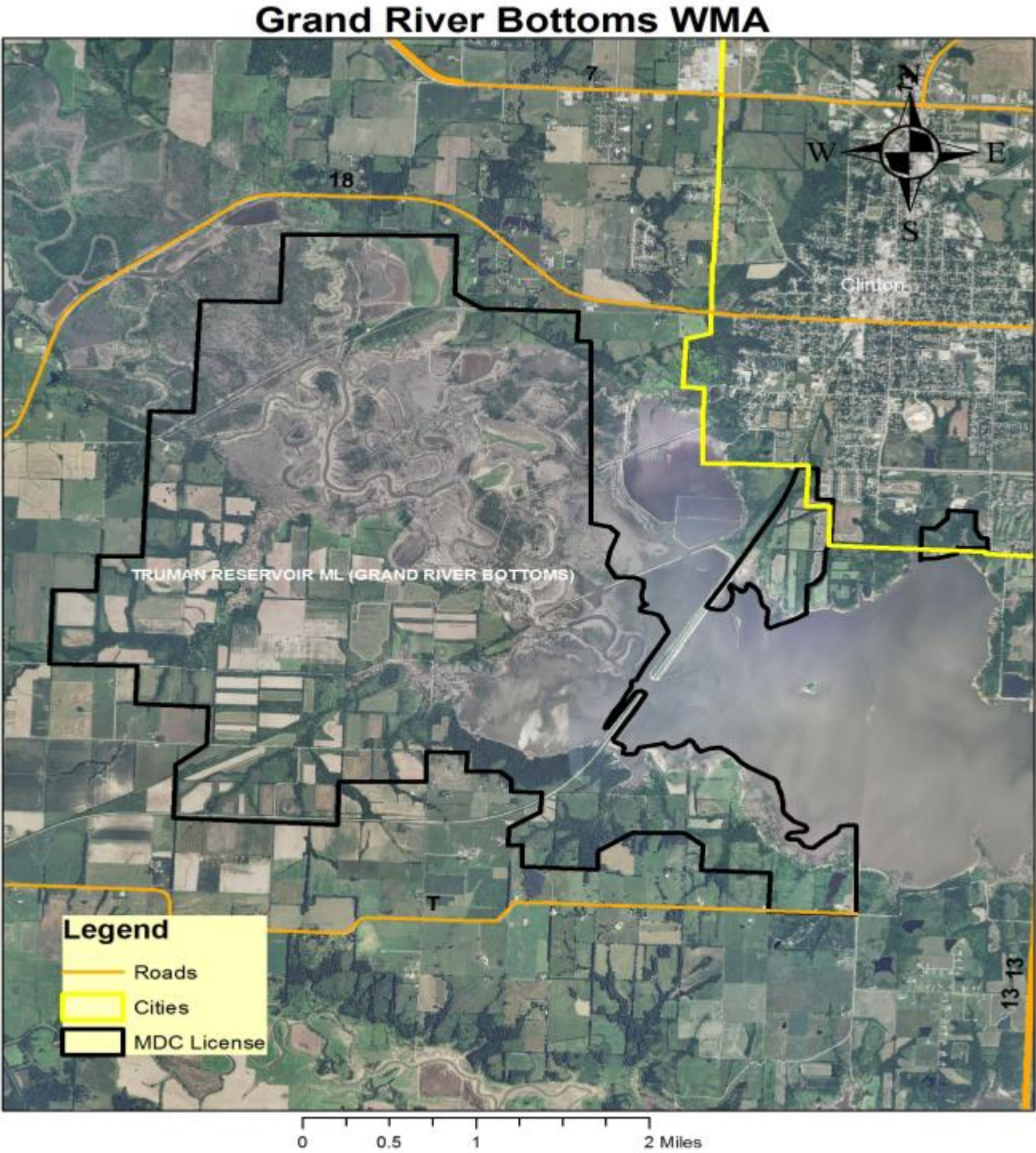


Figure 12: Aerial Bethlehem WMA

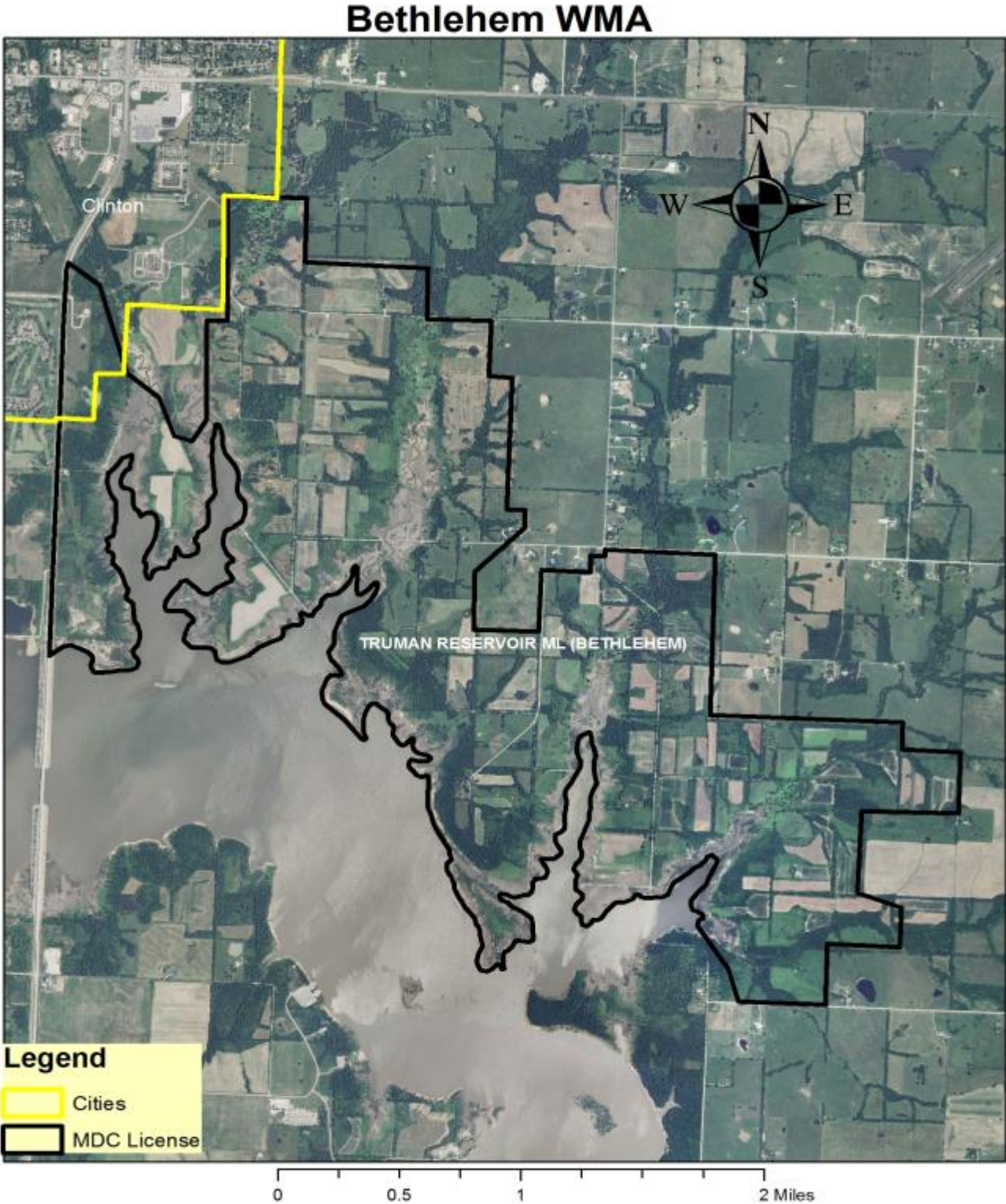


Figure 13: Aerial Upper Tebo Creek WMA

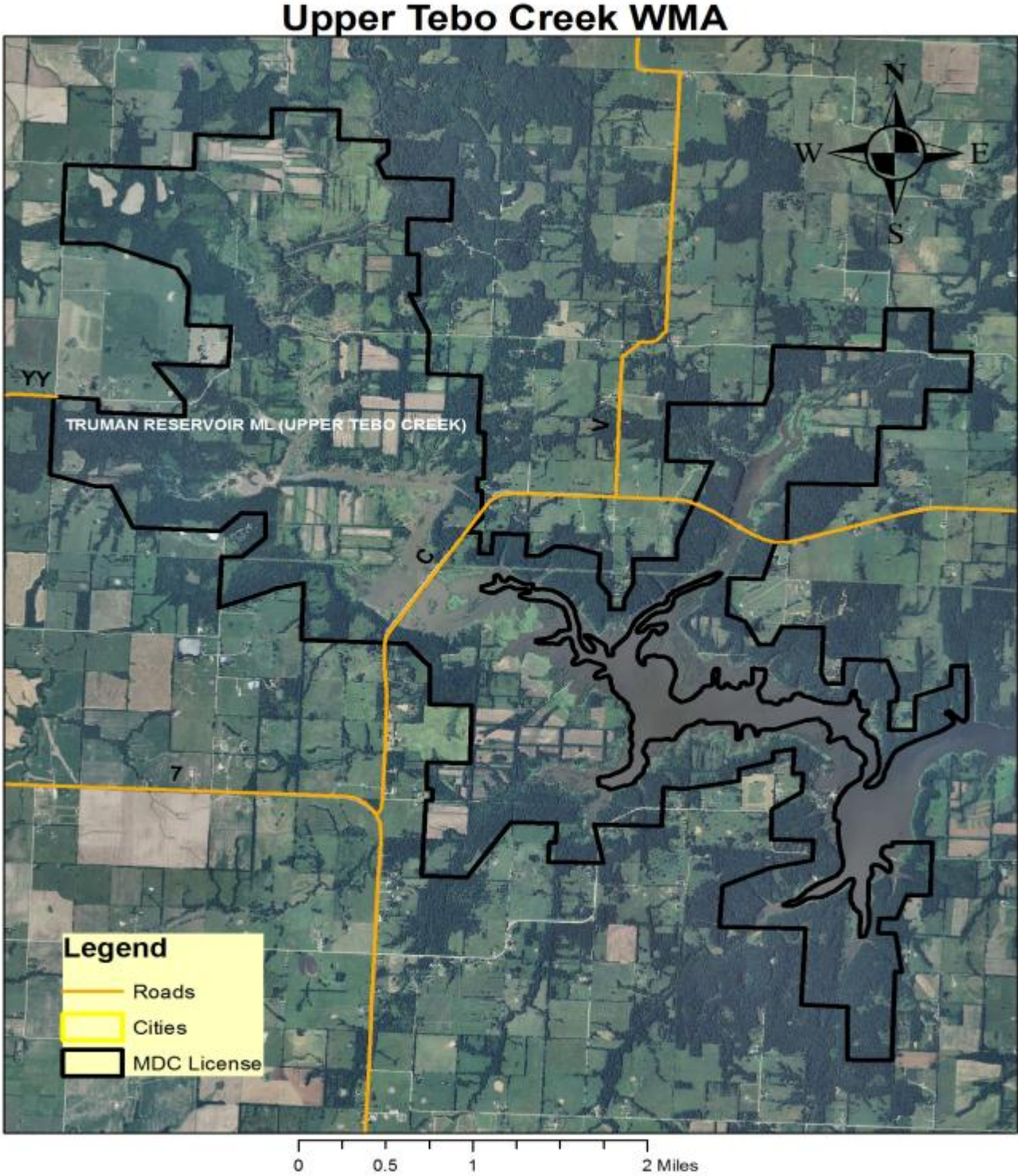


Figure 14: Aerial Leesville WMA

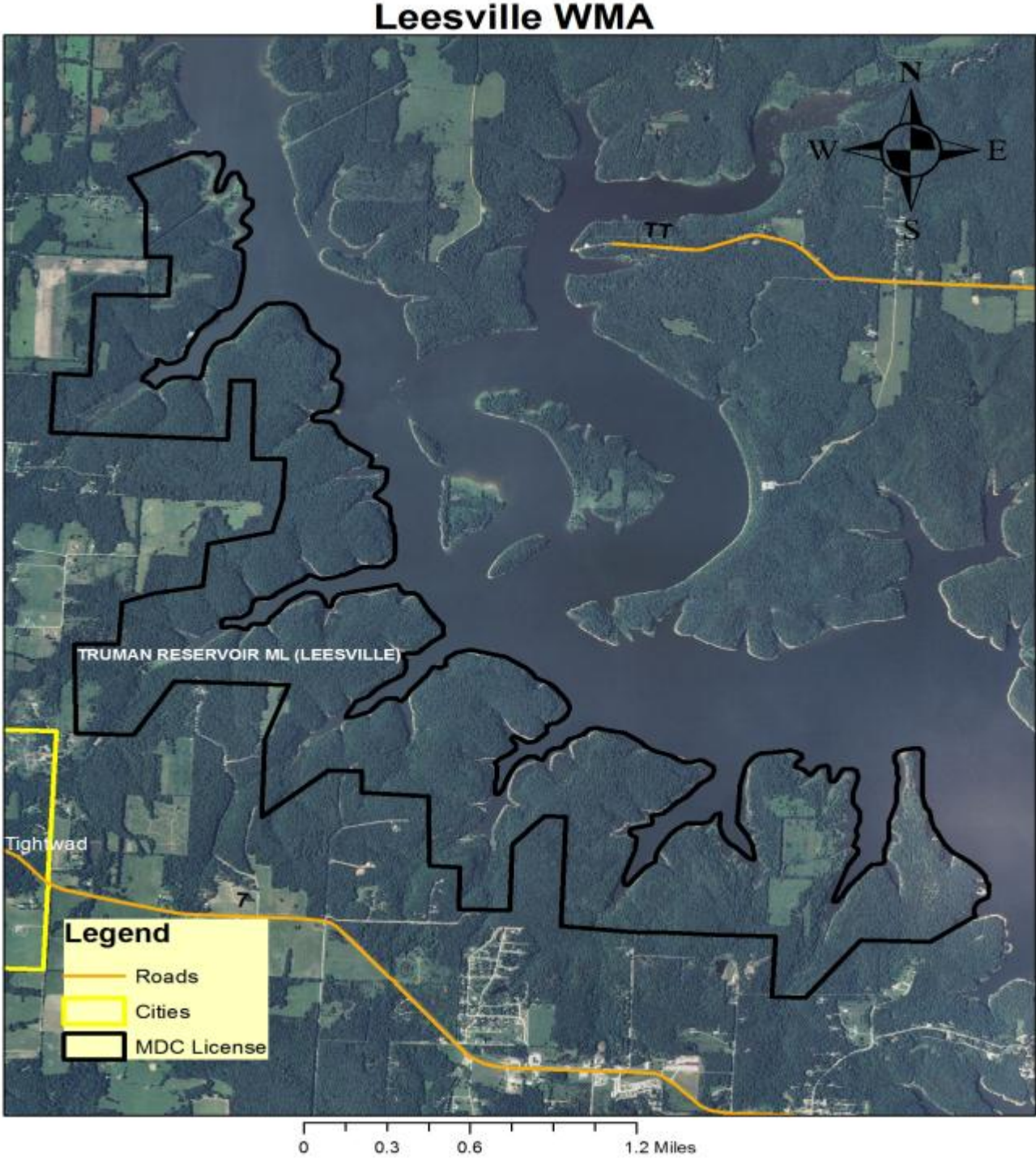


Figure 15: Aerial Little Tebo Creek WMA

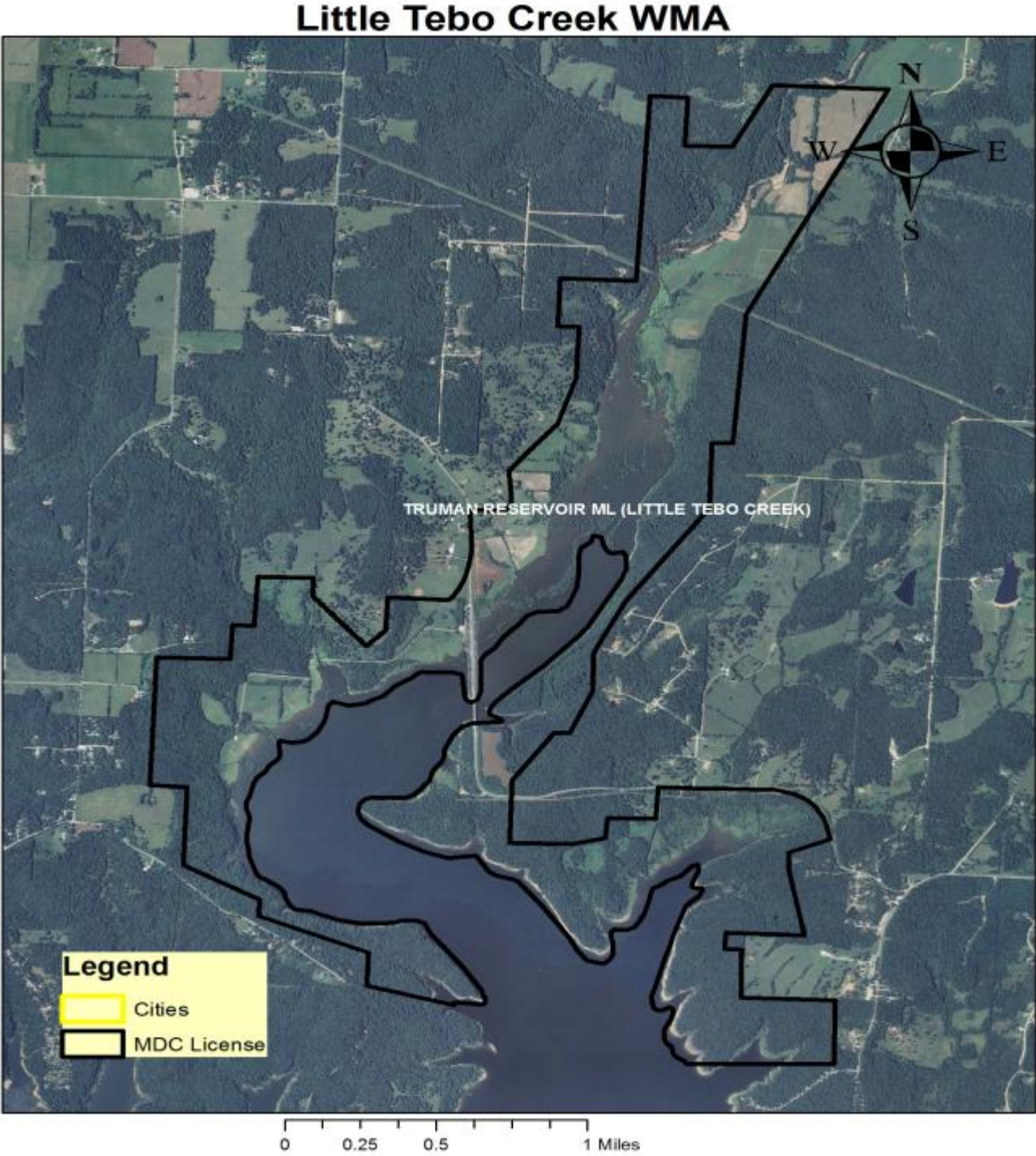


Figure 16: Aerial Brownington WMA

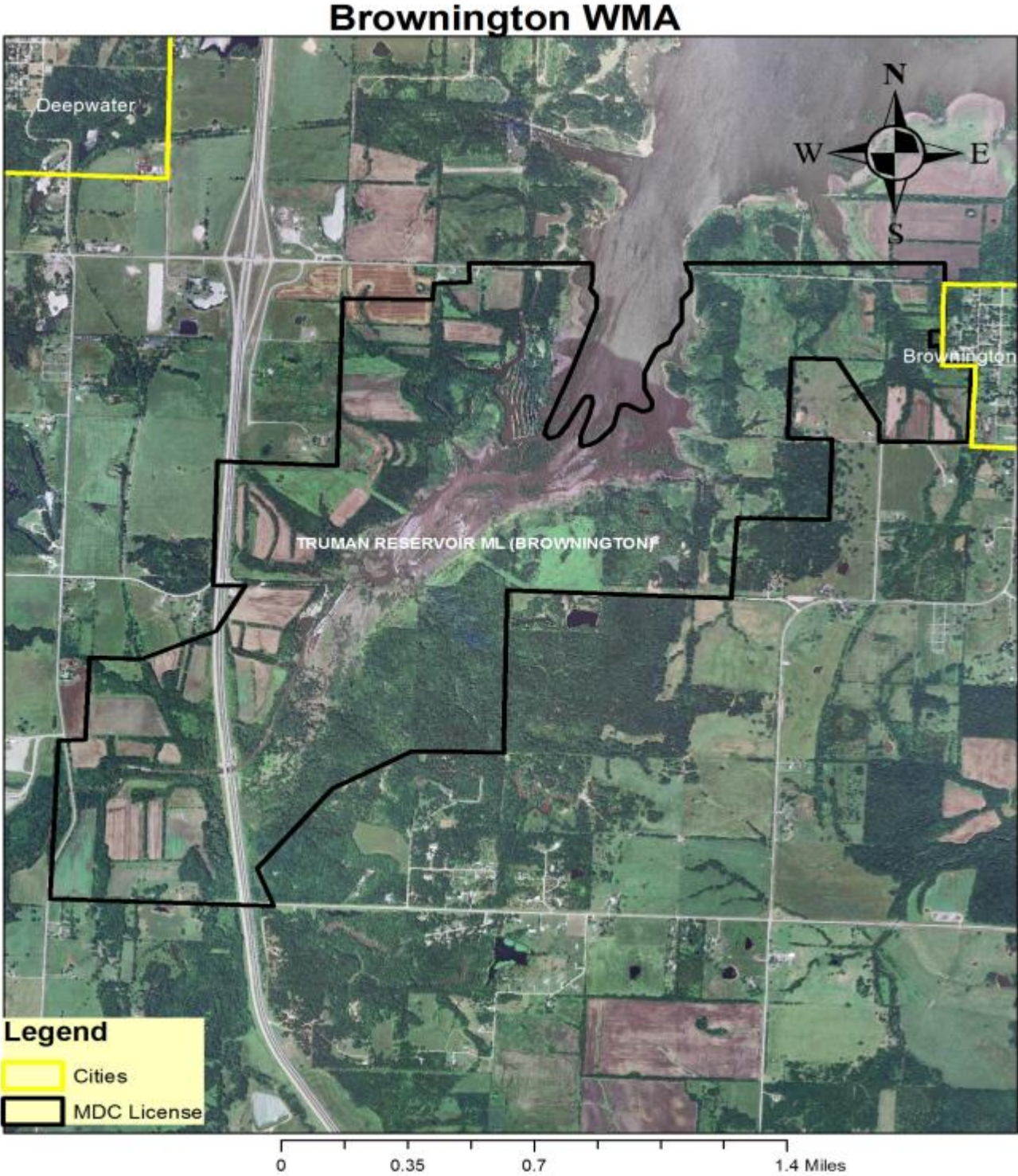


Figure 17: Aerial Cedar Creek WMA

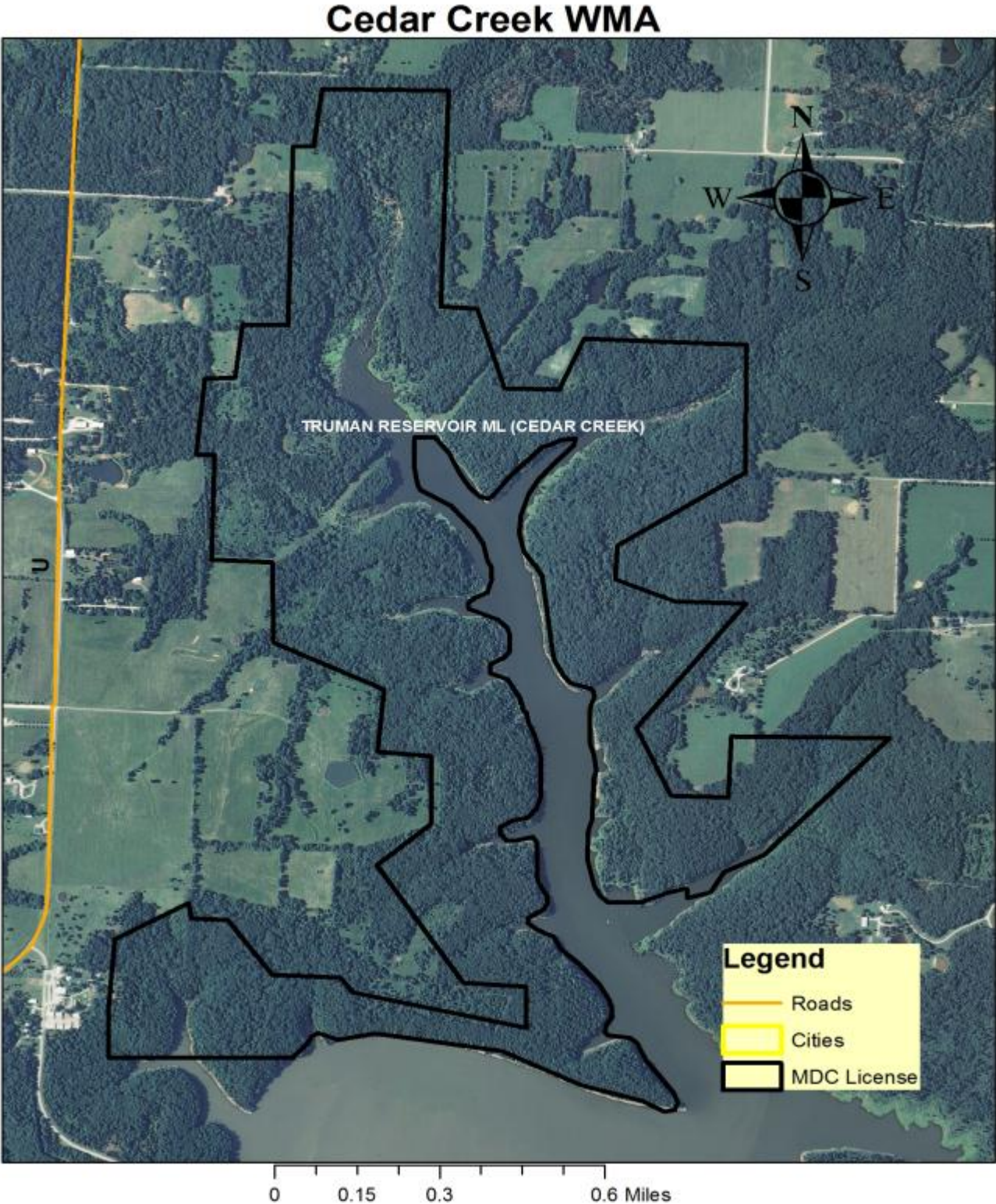


Figure 18: Brush Creek WMA

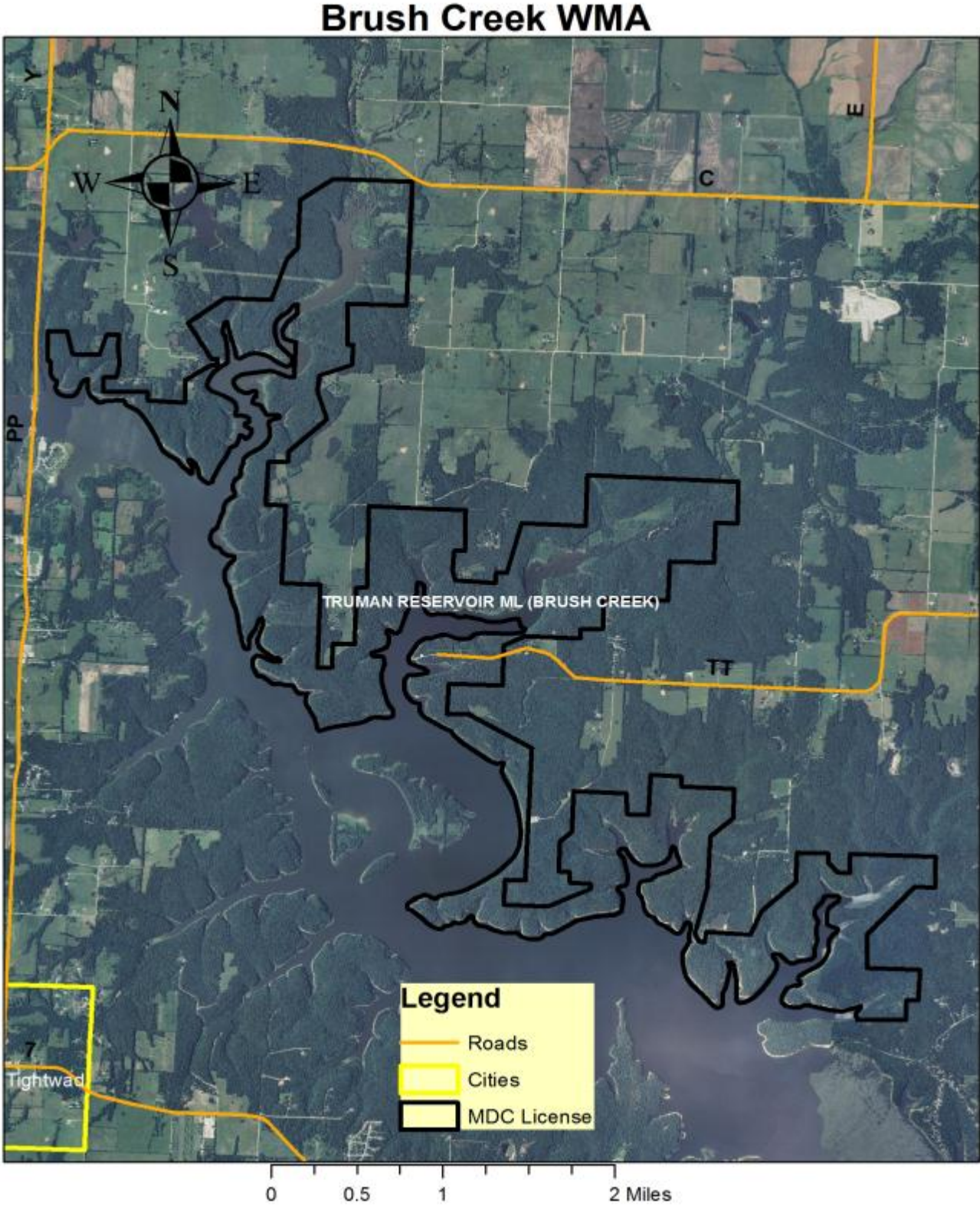


Figure 19: Aerial Gough Eye WMA

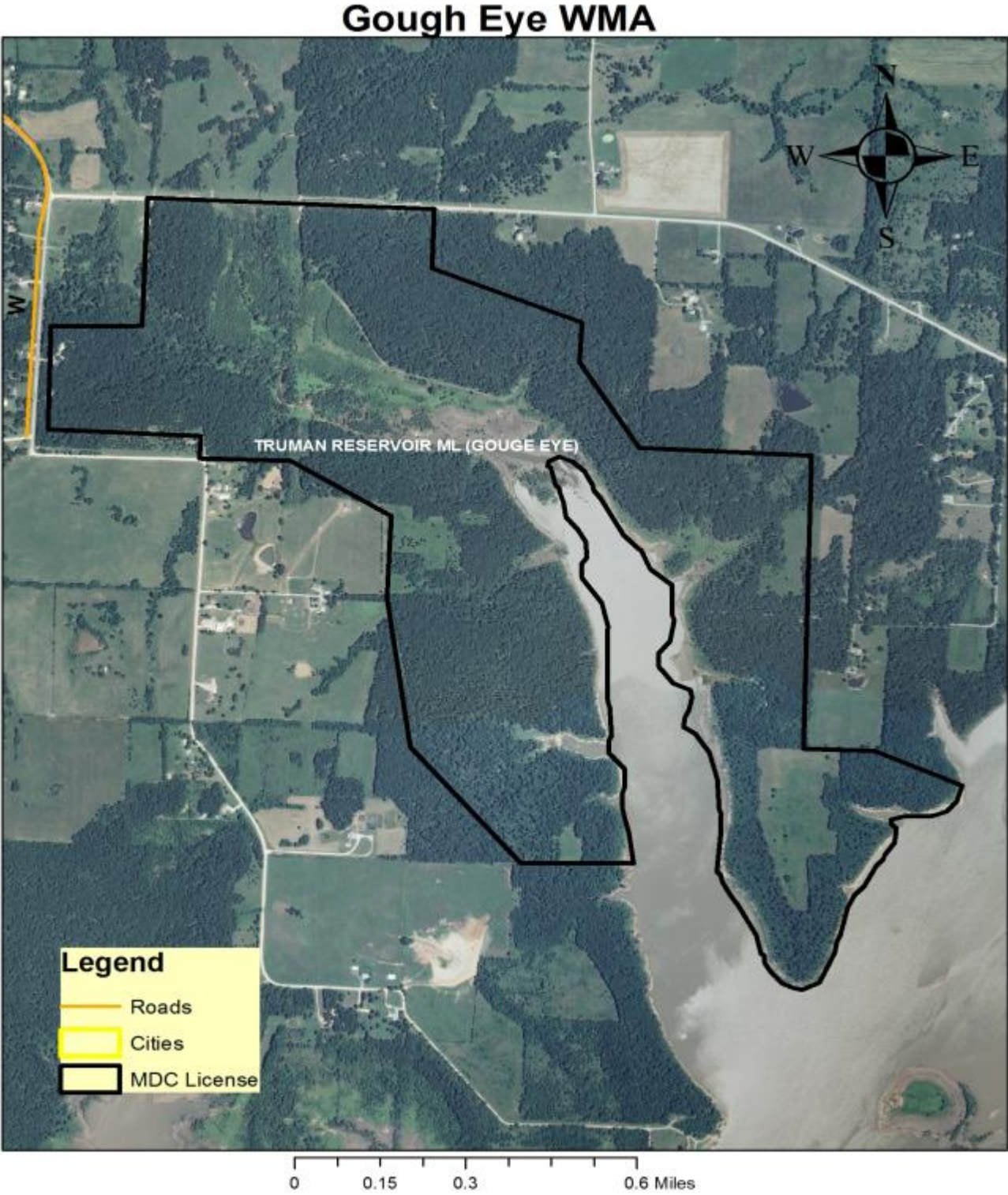


Figure 20: Aerial Weaubleau WMA

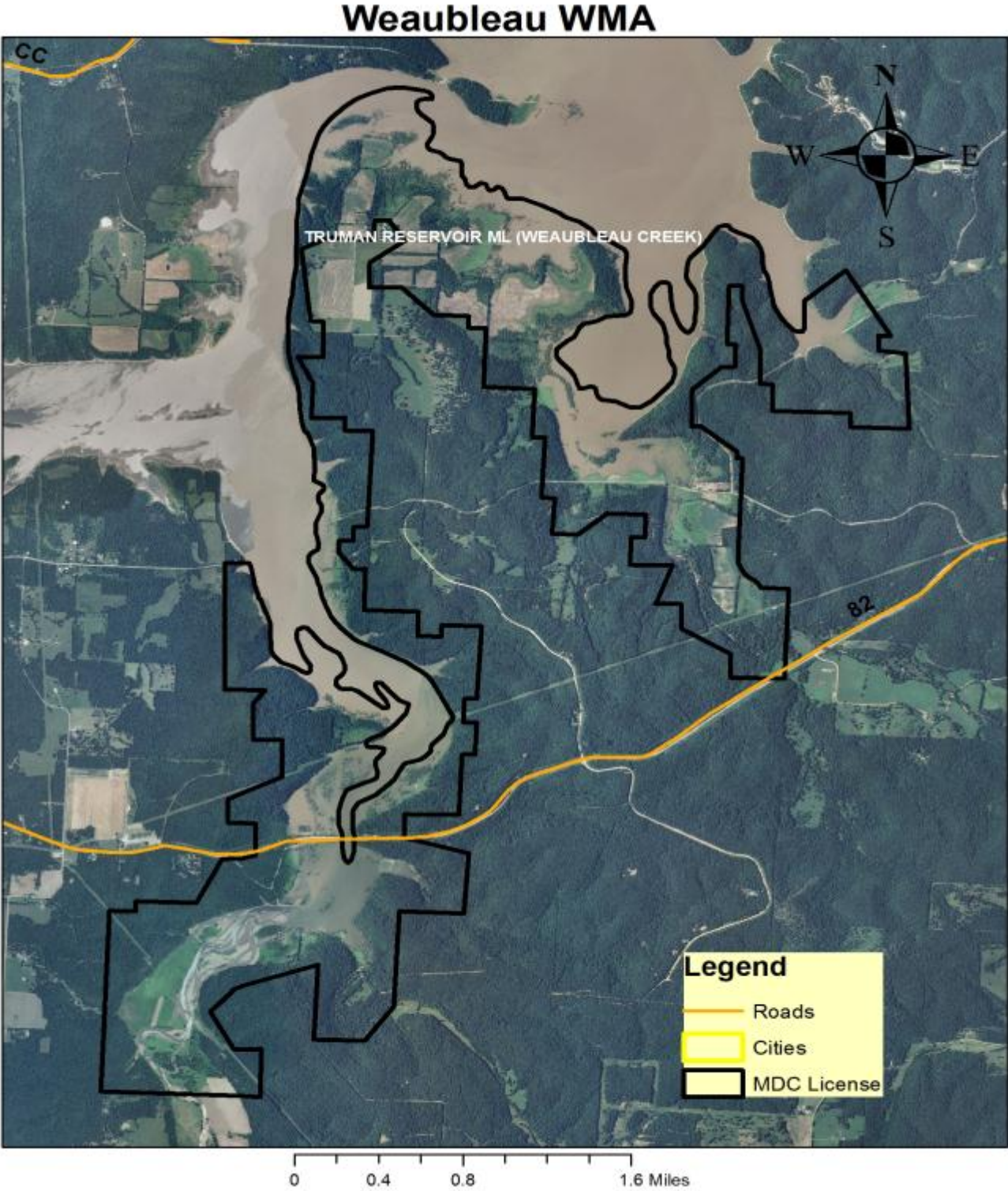


Figure 21: Aerial Tebo Islands WMA

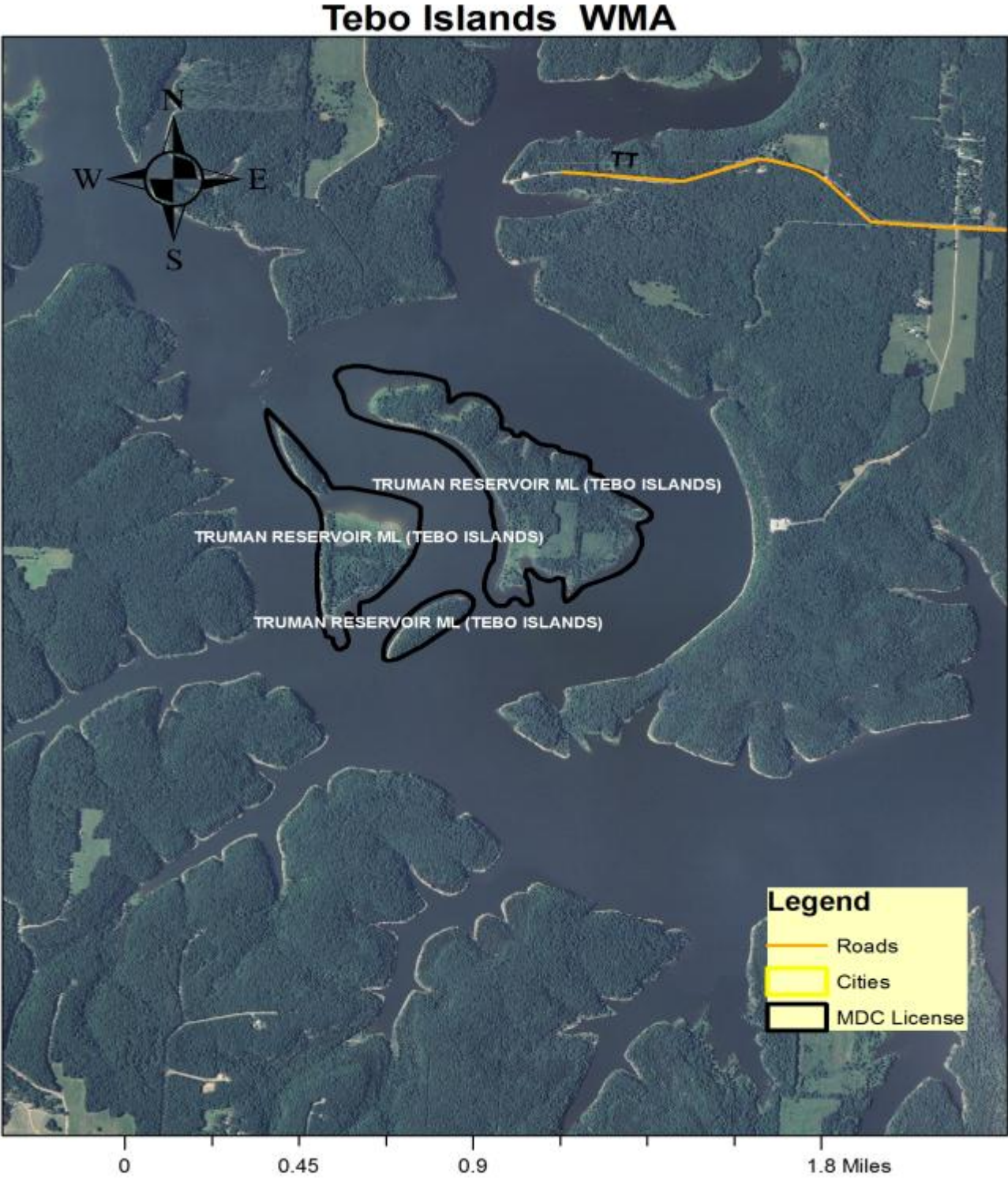


Figure 22: Aerial Clinton Office

