

Little Lost Creek Conservation Area

Ten-Year Area Management Plan FY 2017-2026



Josi B. Allen

Forestry Division Chief

3-24-16

Date

Little Lost Creek Conservation Area Management Plan Approval Page

PLANNING TEAM

Jeff Bakameyer, Resource Forester

Denise Otto, Fisheries Management Biologist

Jordon Beshears, Wildlife Biologist

Bob Lyons, Conservation Agent

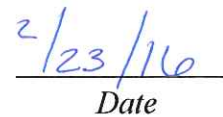
Lia Heppermann, Private Land Conservationist

Guy Vogt, Outreach and Education Resource Assistant

ST. LOUIS REGION

RCT Chair

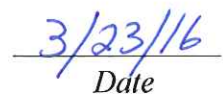

Signature


Date

FORESTRY DIVISION

Forestry Mangement Chief


Signature


Date

OVERVIEW

- **Official Area Name:** Little Lost Creek Conservation Area, #8030
- **Year of Initial Acquisition:** 1980
- **Acreage:** 2,899 acres
- **County:** Warren
- **Division with Administrative Responsibility:** Forestry
- **Division with Maintenance Responsibility:** Forestry
- **Statements of Primary Purpose:**

A. Strategic Direction

The primary purpose of the Little Lost Creek Conservation Area (CA) is to create and maintain a healthy, diverse and sustainable mosaic of forest, woodland and glade communities that provide habitat to a wide variety of plants and animals; provide a wide variety of high quality recreational opportunities for the public; and maintain high quality infrastructure and resources that make these recreational opportunities possible.

B. Desired Future Condition

The desired future condition of the Little Lost Creek CA is a healthy forest/woodland/glade complex intermixed with a diversity of open land natural communities.

C. Federal Aid Statement

N/A

GENERAL INFORMATION AND CONDITIONS

I. Special Considerations

A. Priority Areas: Missouri River Hills Terrestrial Conservation Opportunity Area, Missouri River Hills Priority Forest Landscape, The Nature Conservancy's Central Missouri Hills Conservation Portfolio Site, Lost Creek Aquatic Conservation Opportunity Area, Audubon Missouri Important Bird Area

B. Natural Areas: None

C. Other: A 289-acre block of forest/woodland is designated as permanent old-growth in Compartment 4. Forest management will follow management guidelines provided in *Options for Increasing Ruffed Grouse Habitat on Daniel Boone and Little Lost Creek Conservation Areas - Warren County, Missouri* (Bakameyer, Blatz, Isabelle & Raeker, 2013).

II. Important Natural Features and Resources

A. Species of Conservation Concern: Species of conservation concern are known from this area. Area Managers should consult the Natural Heritage Database annually and review all management activities with the Natural History Biologist.

B. Caves: None

C. Springs: Yes, records kept with Department Natural History Biologist.

D. Other: Little Lost Creek CA is in the Forested Rugged Hills and Breaks land type association within the Outer Ozark Border subsection of the Ozark Highlands section. This land type consists mostly of exceptionally steep and rugged lands that are associated with many river valleys. Local relief is 250 to 450 feet, with narrow ridges, steep-sided slopes and narrow, sinuous valleys. Historically the most densely wooded landscapes in the region, these landscapes are associated with a variety of parent materials (including loess, limestone, sandstone and cherty residuum), soils and forest/woodland types. Outstanding spring-fed perennial creeks and small rivers have gravel beds and deeply incised valleys. Today, much of this landscape is still largely timbered in second-growth forest with high habitat diversity including numerous woodland and forest types, glades, fens, cliffs, caves, springs and streams. Many areas contain more trees than they did historically and often species mixes are different from past mixes.

III. Existing Infrastructure

- 5 parking lots
- 7.0-mile natural surface/gravel multi-use (hike/bike/horse) trail
- 2.75 miles of area service roads (natural surface/gravel)
- 4 picnic/primitive camping sites (no amenities provided)
- 4 fishless ponds (1.2 acres)
- 17 wildlife watering holes (1.0 acres)

IV. Area Restrictions or Limitations

A. Deed Restrictions or Ownership Considerations: None

B. Federal Interest: Federal funds may be used in the management of this land. Fish and wildlife agencies may not allow recreational activities and related facilities that would interfere with the purpose for which the State is managing the land. Other uses may be acceptable and must be assessed in each specific situation.

C. Easements: There are three known easements on the area. There is a buried pipeline, a buried fiber optic line, and an above ground electric line.

D. Cultural Resources Findings: Yes, records kept with Missouri Department of Conservation (the Department) Environmental Compliance Specialist. Managers should follow Best Management Practices for Cultural Resources found in the Department Resource Policy Manual.

E. Endangered Species: None observed.

F. Boundary Issues: An 80-acre private inholding is found within the area.

MANAGEMENT CONSIDERATIONS

V. Terrestrial Resource Management Considerations

Little Lost Creek CA is comprised of approximately 2,734 acres of forests, woodlands and scattered glades. Approximately 165 acres of open land in various stages of succession are also found on the area. Forest and woodland/glade management will be directed at maintaining healthy forest and woodland/glade natural communities for wildlife habitat. Open land management will be directed at maintaining healthy open land communities for wildlife habitat.

The forests and woodlands/glades on Little Lost Creek CA can be divided into two general categories:

- 1) Southern and Western aspects: These sites are typically dry and rocky with poor soil moisture and fertility, and are generally classified as woodlands. Trees exhibit slow growth, poor form and are of low quality for timber value. Typical tree species found on these sites include white oak, black oak, post oak, chinkapin oak, various hickory species and an understory of serviceberry, dogwood and sugar maple, among other species. These sites also have some small glade inclusions that contain a variety of grass and forb species.
- 2) Northern and Eastern aspects: These sites typically retain more soil moisture and fertility and are generally classified as forests. Trees exhibit moderate to fast growth, good form, and are of higher quality for timber value. Typical tree species found on these sites include white oak, red oak, sugar maple, various hickory species, and scattered walnut, ash, elm, and basswood. The understory typically contains sugar maple, ironwood, and dogwood, along with scattered paw paw and spicebush.

Prior to Department ownership, the forests and woodlands/glades on Little Lost Creek CA saw a lot of intense use and abuse. In the early 1900s, almost all marketable timber that was accessible was harvested. Later, around the 1930s, wooded areas were pushed back as far as possible and burned frequently to improve grazing conditions for livestock. Meanwhile, several invasive species such as fescue, sericea lespedeza, and autumn olive were introduced to the area.

Since the Department acquired the conservation area in 1980, a variety of management practices have been implemented. Forestland has been broken into four compartments and these compartments are inventoried and managed on a 15-year schedule. Forest management activities are implemented to create a combination of early, mid, and late successional stages of forest. Many fields have been restored or maintained to native warm-season grasses/forbs. Wildlife food plots have been installed, which serve the dual

purpose of providing a different food source for wildlife and wildlife viewing/hunting areas for the public. Practices to control and treat invasive species have been implemented. Wildlife watering holes have been constructed and renovated and these serve as important breeding sites for a variety of amphibians.

Mature forests on the area still show some signs of past abuse. Conditions have greatly improved since Department ownership began due to more sustainable and conscientious forest management practices being employed. Sugar maple and other shade tolerant/fire intolerant species have expanded their range in the forests in the past several decades, since the scale and frequency of fire was altered. A lack of management in some areas has also led to some of the forest sites being overstocked with trees. A combination of commercial and non-commercial forest management techniques and prescribed fire have been used to manage the area for healthy and sustainable natural communities that provide wildlife habitat for a large diversity of species. Despite past and continuing efforts, some invasive species still occur on the area. Garlic mustard and autumn olive are the most detrimental invasive species at the current time and affect the largest land area.

Challenges and Opportunities:

- 1) Manage forest/woodland/glade communities.
- 2) Control invasive species.
- 3) Manage field/woodland edge communities.

Management Objective 1: Maintain a healthy forest/woodland/glade complex with management emphasis on wildlife habitat.

Strategy 1: Monitor forest/woodland/glade/openland habitats for invasive vegetation, diseases, and insects. Use a combination of mechanical, herbicide and prescribed fire to suppress any infestations that may develop (Forestry).

Strategy 2: Retain and protect existing den trees according to established guidelines (Forestry).

Strategy 3: Complete forest compartment inventories according to compartment inventory schedule and manage forest/woodland/glade stands according to stand prescriptions. Compartment 1 is scheduled for inventory in 2017 and Compartment 2 is scheduled for inventory in 2021 (Forestry).

Strategy 4: Use management tools such as mechanical thinning, herbicide and prescribed fire to manage forest and woodland/glade stands. Even-aged and uneven-aged management techniques should be used in managing forested and woodland stands (Forestry).

Strategy 5: Follow management regime as detailed in *Options for Increasing Ruffed Grouse Habitat on Daniel Boone and Little Lost Creek Conservation Areas – Warren County, Missouri* (Bakameyer, Blatz, Isabelle & Raeker, 2013) in

order to improve habitat suitability for wildlife species that require early successional forest habitat (Forestry).

Strategy 6: Implement best management practices to prevent soil erosion during forest and woodland management activities according to the *Missouri Watershed Protection Practice – 2014 Management Guidelines for Maintaining Forested Watersheds to Protect Streams* (Missouri Department of Conservation, 2014).

Management Objective 2: Maintain a healthy openland/woodland edge complex with management emphasis on wildlife habitat.

Strategy 1: Use a combination of tillage, mowing, herbicide and prescribed fire to manage native grass/forb fields, old fields and wildlife food plots (Forestry).

Strategy 2: Monitor openland/woodland edge habitats for invasive vegetation. Use a combination of mechanical practices, herbicide, and prescribed fire to suppress these species (Forestry).

VI. Aquatic Resource Management Considerations

Lost Creek is a Missouri River tributary and is characterized as an Ozark Border stream. Lost Creek Watershed is designated as an Aquatic Conservation Opportunity Area.

Little Lost Creek CA lies within the Lost Creek Watershed, a designated Aquatic Conservation Opportunity Area. The conservation area contains 6.4 miles of first-order stream and 2.5 miles of second-order stream (Little Lost Creek). The stream reaches in the conservation area have fully forested riparian corridors.

Stream resources on this area have the potential to be affected by the multi-use (hike/bike/horse) trail. Parts of this trail cross, or are adjacent to, Little Lost Creek.

Little Lost Creek CA has 17 small ponds that were constructed as wildlife watering holes or formed by old clay strip pits. Four larger ponds are 0.35, 0.34, 0.3 and 0.19 acres in size. Fish are not stocked in these ponds.

Challenges and Opportunities:

- 1) Improve water quality and health of streams on the area.
- 2) Investigate the opportunity to stock fish in the four largest ponds.
- 3) Manage fishless ponds for optimum wildlife benefit.

Management Objective 1: Improve water quality and health of streams on the area.

Strategy 1: Monitor stability of trail crossings (Fisheries, Forestry).

Strategy 2: Manage riparian forested corridors according to the *Watershed and stream management guidelines for lands and waters managed by Missouri*

Department of Conservation (Missouri Department of Conservation, 2009)
(Forestry).

Management Objective 2: Investigate the opportunity to stock fish in the larger impoundments.

Strategy 1: Measure depth and observe habitat of the ponds (Fisheries).

Strategy 2: Seek opinions on the benefits and liabilities of stocking the ponds (Fisheries, Forestry).

Management Objective 3: Manage fishless ponds for optimum wildlife benefit.

Strategy 1: Survey fishless ponds, as needed, to confirm the absence of fish. Use a piscicide to remove fish, where appropriate (Fisheries).

VII. Public Use Management Considerations

Challenges and Opportunities:

- 1) Provide for high quality hunting, wildlife viewing and other recreational opportunities.
- 2) Improve educational and interpretive opportunities.
- 3) Build relationships with neighboring landowners.
- 4) Maintain the multi-use trail found on the area.

Management Objective 1: Provide for high quality hunting, wildlife viewing and other recreational opportunities.

Strategy 1: Complete management activities that will provide habitat for a diversity of wildlife and plant species (Forestry).

Strategy 2: Maintain and renovate wildlife food plots as needed (Forestry).

Strategy 3: Maintain the multi-use trail to provide hiking, biking, horseback riding and viewing opportunities (Forestry).

Strategy 4: Provide furbearer trapping opportunities on the area (Forestry).

Management Objective 2: Improve educational and interpretive opportunities on the area.

Strategy 1: Communicate to the general public about recreational opportunities (e.g., brochures, Atlas database) (Forestry).

Strategy 2: Explore the possibility of holding a habitat management workshop/tour on the area to showcase a variety of forestry and wildlife management techniques (Forestry, Outreach and Education).

Management Objective 3: Facilitate a good working relationship with neighboring landowners.

Strategy 1: Promote active wildlife habitat and forest management on neighboring landowner properties by making contact with landowners. Use management of Little Lost Creek CA to provide an example of quality management. (Forestry, Private Land Services).

Strategy 2: Work with the local Quail and Upland Wildlife Federation group to reach out to neighboring landowners regarding management of their forest land for wildlife (Forestry, Private Land Services).

Strategy 3: Maintain signage and boundary markings at least every five years to clearly designate Department property boundaries (Forestry).

VIII. Administrative Considerations

Challenges and Opportunities:

- 1) Maintain area infrastructure at current levels.
- 2) Acquisition of land.

Management Objective 1: Maintain area infrastructure at current levels.

Strategy 1: Maintain area infrastructure in accordance with Department guidelines (Forestry).

Lands Proposed for Acquisition:

When available, adjacent land may be considered for acquisition from willing sellers. Tracts that improve area access, provide public use opportunities, contain unique natural communities, and/or species of conservation concern, or meet other Department priorities, as identified in the annual Department land acquisition priorities, may be considered (Forestry).

MANAGEMENT TIMETABLE

Strategies are considered ongoing unless marked in the following table:

	FY17	FY18	FY19	FY20	FY21	FY22	FY23	FY24	FY25	FY26
Terrestrial Resource Management										
<i>Objective 1</i>										
Strategy 3		X				X				
Aquatic Resource Management										
<i>Objective 2</i>										
Strategy 1	X									
Strategy 2	X									
<i>Objective 3</i>										
Strategy 1	X									
Public Use Management										
<i>Objective 2</i>										
Strategy 1	X									
Strategy 2	X									
<i>Objective 3</i>										
Strategy 3	X					X				

APPENDICES

Area Background:

The Little Lost Creek CA is located in Warren County, about 4 miles south/southwest of Pendleton. The Department acquired the first tract of this area in 1980 and manages it to improve forest and woodland health, wildlife habitat and provide the public with opportunities for hunting, fishing, hiking and wildlife viewing.

This 2,899-acre area is located in the Outer Ozark Border subsection of the Ozark Highlands section. It is over 90 percent forested and includes a mosaic of forest and woodland/glade communities.

A variety of forest and woodland management practices are conducted on the area, including commercial thinning (harvests), non-commercial thinning (timber stand improvement), invasive species control and prescribed burning. Deer, turkey, squirrel, raccoon and other mammals associated with Missouri forest and woodland habitat are frequently seen here, along with a variety of reptiles and amphibians. During the spring through early fall, a variety of neo-tropical birds call the area home; many other bird species are year-round residents.

The area is open to the public from 4 a.m. to 10 p.m. daily. Special facilities include four camping/picnic areas and an approximately 7-mile multi-use trail that is open for most of the year to horseback riding, hiking and biking.

Current Land and Water Type:

Land/Water Type	Acres	Feet	% of Area
Forest/Woodland/Glade	2,734		94.3
Field	157		5.4
Crop Land (Food Plot)	8		0.2
Total	2,899		100
Stream Frontage		13,200	

Public Input Summary:

The draft Little Lost Creek Conservation Area Management Plan was available for a public comment period August 1–31, 2015. The Missouri Department of Conservation received comments from 11 respondents (Appendix A). The Little Lost Creek Conservation Area Planning Team carefully reviewed and considered these ideas as they finalized this document. A brief summary of public input themes, including how they were incorporated or why they were not, can be found below. Rather than respond to each individual comment, comments are grouped into general themes and are addressed collectively.

Department responses to themes and issues identified through Little Lost Creek Conservation Area public comment period

Supports continuing diverse forest/woodland management.

Forest and woodland management is a high priority on this area to provide healthy natural communities that are utilized by a wide variety of wildlife species. Managing for a diversity of wildlife species requires providing a diversity of natural communities, which also includes providing a range of age classes of forest and woodland communities. For example, many species of wildlife need early successional forest habitat (forests younger than 25 years of age) in order to reproduce and survive while other species prefer more mature forests. Management activities that are utilized in order to provide this habitat include timber stand improvement (TSI), commercial harvesting, prescribed burning, and invasive species treatment.

Suggests adding food plots for dove hunting.

Dove management, while possible, is unlikely on this area. The location of Little Lost Creek CA does not lend itself well to a high population of doves and several adjoining counties to Warren County already provide intensive dove management fields on some of their conservation areas.

Suggests providing habitat for honey bees.

Much of the natural community management that we have been performing for years on the area should have great benefits to bees and other pollinators. Specifically, management such as woodland and glade restoration stimulates a great diversity of native wildflowers and grasses to populate those sites once the thinning and prescribed burning help to get more sunlight down to the ground. We have seen a very impressive increase in species and numbers of flowers on many of the woodland and glade sites that we have been managing for years now. This work will continue into the future. In addition, in the late winter/early spring of 2015, almost 50 acres of fields around the area were planted to a diverse mixture of native wildflowers and grasses. It oftentimes takes a couple years to see the results of this planting as the plants spend the first couple of years building their root systems before they start growing a lot above ground. Within a few years though, these fields should provide a great mixture and abundance of wildflowers for bees and other pollinators.

Suggests managing for quail.

Quail can be difficult to successfully manage for, even in the habitat types that are overall suitable to them. They have some very specific needs that, if not met, make it extremely difficult to sustain a healthy population. Little Lost Creek CA does provide some habitat that should be inviting and usable for a limited amount of quail, but a vast majority of the area is in some form of forested habitat, and this greatly hinders the chances of creating or sustaining a large population of quail. Much of the openland on the area is maintained in a mixture of native grasses and wildflowers with scattered thickets of woody species such as sumac, dogwood, plum,

and others. As mentioned in the preceding comment, almost 50 acres of fields that were dominated by low quality plants species in terms of wildlife were recently planted to a diverse mixture of native wildflowers and grasses. In the coming years, these fields should become more suitable for quail. In addition, woodland management we have been completing for years on the area provides useful quail habitat. This work will continue to be completed in the future. We hope to see increased quail numbers on the area in the coming years, but due to the limited amount of openland on the area, quail populations will likely remain at low levels.

Curious about what is planted in Compartments 1 and 2.

The native wildflower and grass planting in Compartments 1 and 2 in the winter/spring of 2015 covered approximately 12.5 acres and the mixture was comprised of: shining bluestar, pale purple coneflower, yellow coneflower, Indian paintbrush, blue indigo, cream wild indigo, wild bergamont, butterfly weed, grey headed coneflower, purple coneflower, white wild indigo, white prairie clover, purple prairie clover, leadplant, rattlesnake master, slender mountain mint, New England aster, sky blue aster, rough blazing star, prairie hyacinth, golden alexanders, Sampson snakeroot, fringed poppy mallow, wild quinine, royal catchfly, blue vervain, grey goldenrod, partridge pea, curly cup gum weed, joe pye weed, shooting star, bunch flower, sensitive briar, cup plant, sawtooth sunflower, tall coreopsis, rosinweed, little bluestem, sideoats grama, Virginia wild rye, prairie dropseed, prairie blazing star, blue sage, purple beardtongue, grand coreopsis, white beardtongue, Missouri coneflower, and Illinois bundleflower.

Concern about invasive species (buckthorn) expanding onto neighboring lands.

Buckthorn is not known to occur on Little Lost Creek CA so we assume the commenter may be referring to autumn olive, which is an exotic, invasive species found on the area. Exotic species control is an ongoing priority on all of our conservation areas. Efforts to control and eradicate autumn olive and other exotic species on the area have been occurring for years. Methods used to treat it include herbicide applications, prescribed fire, and mechanical methods such as brush-hogging. Much of this work has been accomplished by Missouri Department of Conservation staff and resources, but in the last two years alone, we have contracted out over 160 acres of autumn olive treatment. Department of Conservation staff will continue to treat autumn olive and other exotic species in the future and work will also continue to be contracted out. Achieving total control of any invasive species generally takes repeated treatments over the course of multiple years. Total eradication of many invasive species may never fully occur as untreated populations of the species that are on adjacent private lands act as a continuing seed source in the area.

Suggests adding a fishing lake. Suggests stocking fish in four larger ponds.

The four larger ponds are too small to manage as a quality fishery and are also hindered by accessibility issues. At this time, the Missouri Department of Conservation has no plans for impoundment construction. Other fishing opportunities on Department land in Warren County include four fishing ponds at Daniel Boone Conservation Area and three fishing ponds at Reifsnider State Forest.

Appreciates multi-use trails for horseback riding. Suggests adding at least five additional miles of multi-use trail to this area. Offers to help maintain multi-use trail.

Currently horseback riding is allowed for most of the year on approximately 7 miles of multi-use trail. Additional trail infrastructure would require additional staff time to create and maintain, so the offer of help to install and maintain this infrastructure is appreciated. The planning team and managing division for this area will give careful consideration to this request as it would provide more recreational opportunities for area users, but it needs to be determined if the amount of additional users that may potentially take advantage of this opportunity is enough to warrant the added time and costs associated with it. Nearby Daniel Boone Conservation Area also features 7 miles of multi-use trails available for horseback riding, hiking, and biking.

Appreciates limited roads through area.

While some area users would likely appreciate a more extensive network of roads open to the public throughout the area, we believe having a limited amount of roads open to vehicles has several advantages. This includes a higher quality experience for area users whether they are hunting or just enjoying the outdoors. This also helps to keep the area more natural and cuts down on the costs of infrastructure creation and maintenance.

Suggests adding a privy.

A privy was determined to be unnecessary on the area due to the overall low amount of use it would be expected to receive. A privy requires a large amount of maintenance and upkeep, which was determined not feasible for the amount of use expected.

Suggests better marking property lines.

As mentioned in Public Use Management Considerations, Objective 3, Strategy 3, signage and boundary markings that designate the area property lines will be revisited at least once every 5 years. The boundary was last marked in winter/early spring of 2012 and we plan on re-marking them in the winter of 2016/2017.

Suggests providing a more detailed map that shows streams, ponds, trails, and access roads.

The map currently found on area brochures and the website for the area is the template used for maps of all conservation areas around the state. At some point in the future this map template may be revised in order to provide a higher degree of detail for all of the conservation areas.

References:

Bakameyer, J., Blatz, R., Isabelle, J., & Raeker, G. (2013). *Options for increasing ruffed grouse habitat on Daniel Boone and Little Lost Creek Conservation Areas - Warren County, Missouri*. Missouri: Missouri Department of Conservation.

Missouri Department of Conservation. (2004). *Little Lost Creek Conservation Area management plan*.

Missouri Department of Conservation. (2009). *Watershed and stream management guidelines for lands and waters managed by Missouri Department of Conservation*. Jefferson City, Missouri: Missouri Department of Conservation.

Missouri Department of Conservation (2014). *Missouri watershed protection practice recommended practices for Missouri forests: 2014 management guidelines for maintaining forested watersheds to protect streams*. Jefferson City, Missouri: Conservation Commission of the State of Missouri.

Nigh, T. A., & Schroeder, W. A. (2002). *Atlas of Missouri ecoregions*. Missouri: Missouri Department of Conservation.

Maps:

Figure 1: Area Map

Figure 2: Aerial Map

Figure 3: Topographic Map

Figure 4: Current Vegetative Map

Figure 5: Proximity Map

Figure 6: Easement Map

Figure 7: Compartment Map

Additional Appendices:

Appendix A: Little Lost Creek Conservation Area Management Plan Public Comments

Figure 1: Area Map

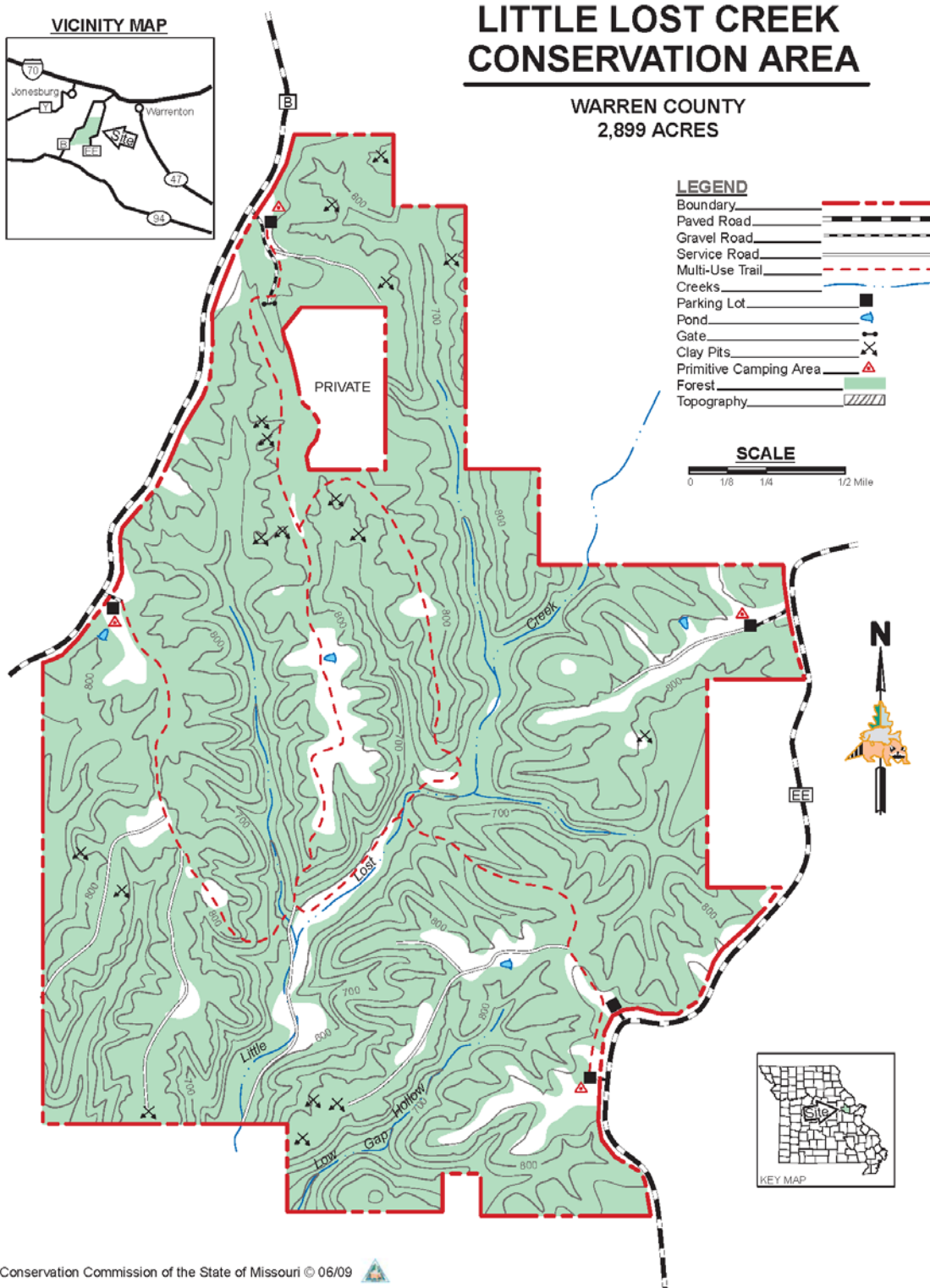
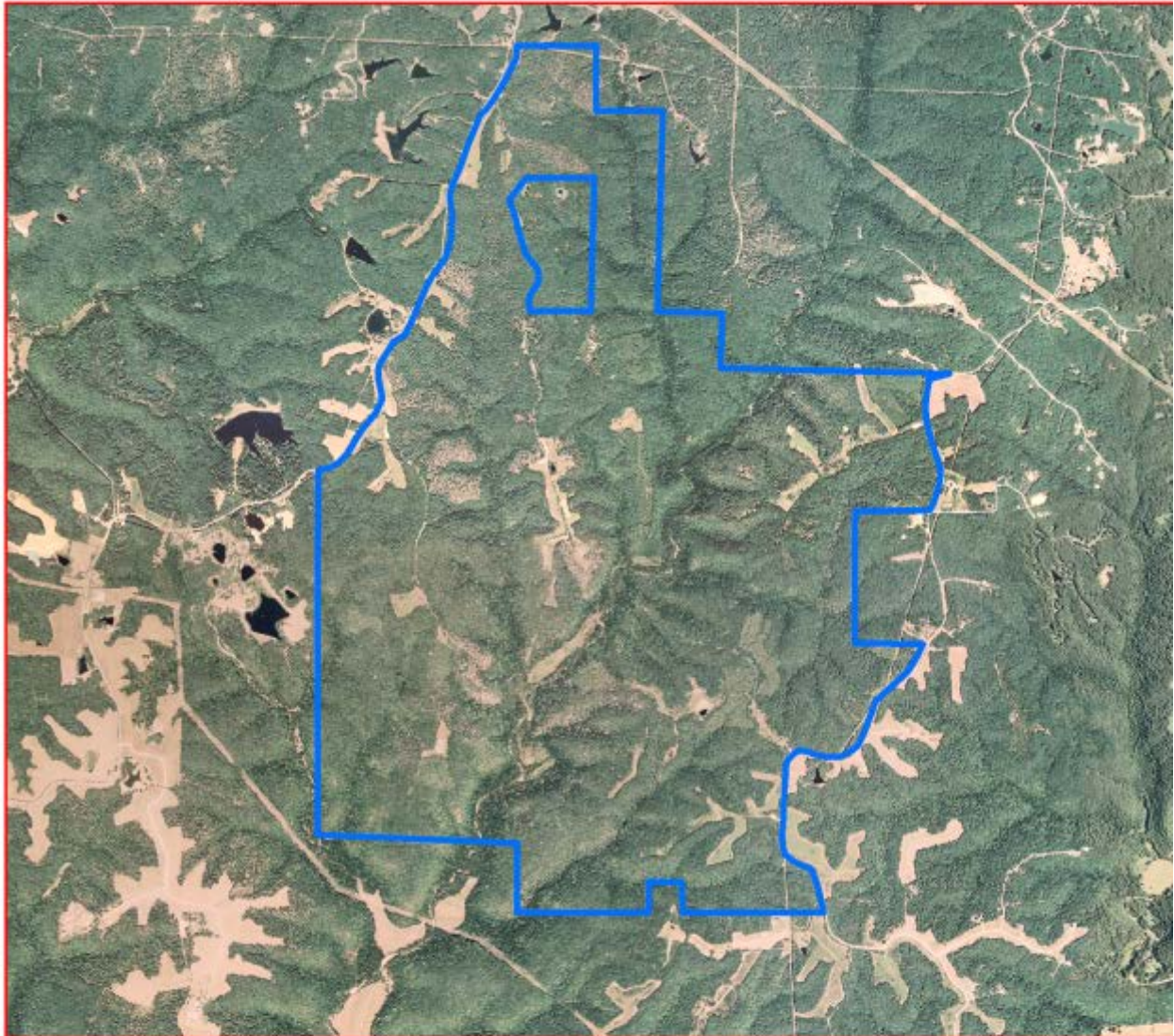


Figure 2: Aerial Map

Little Lost Creek Conservation Area



— = property line

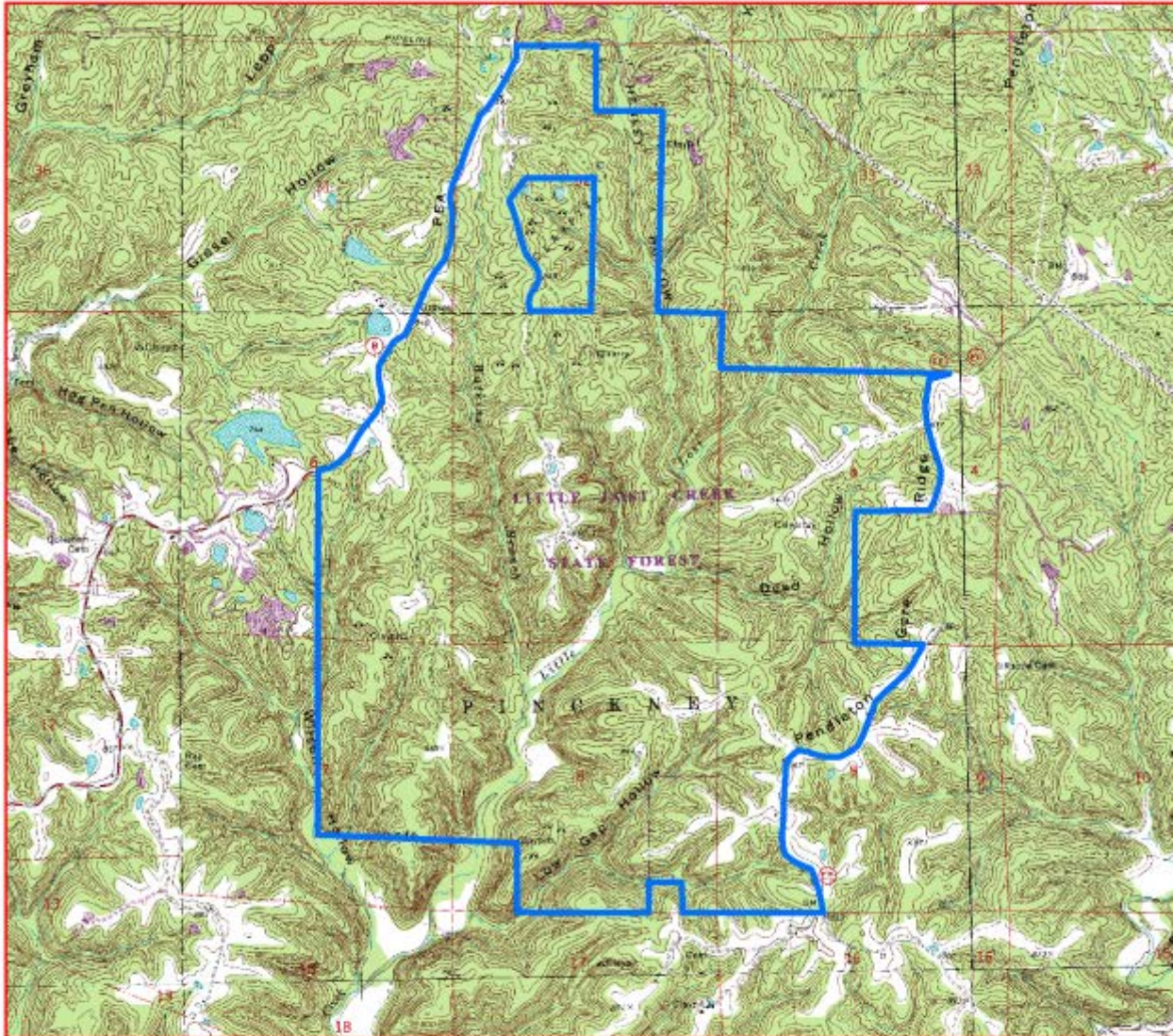


0.6 0.3 0 0.6 Miles

A horizontal scale bar with four segments. The segments are labeled from left to right as 0.6, 0.3, 0, and 0.6 Miles. The bar is black with white markings at the segment boundaries.

Figure 3: Topographic Map

Little Lost Creek Conservation Area

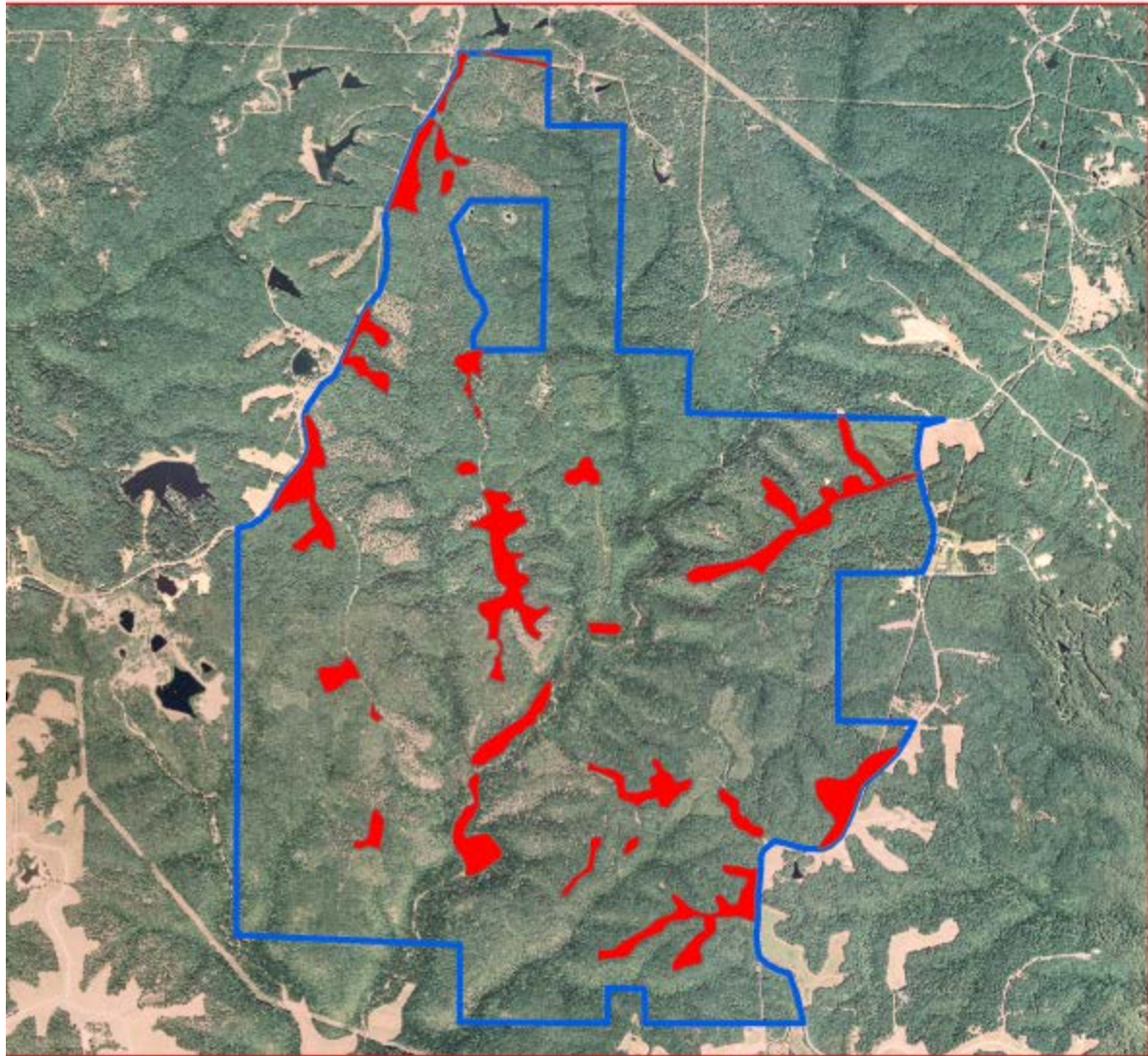


— = property line



Figure 4: Current Vegetative Map

Little Lost Creek Conservation Area



-  = property line
-  = forest/woodland/glade
-  = open land

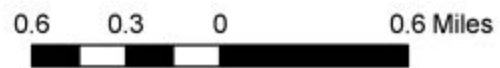
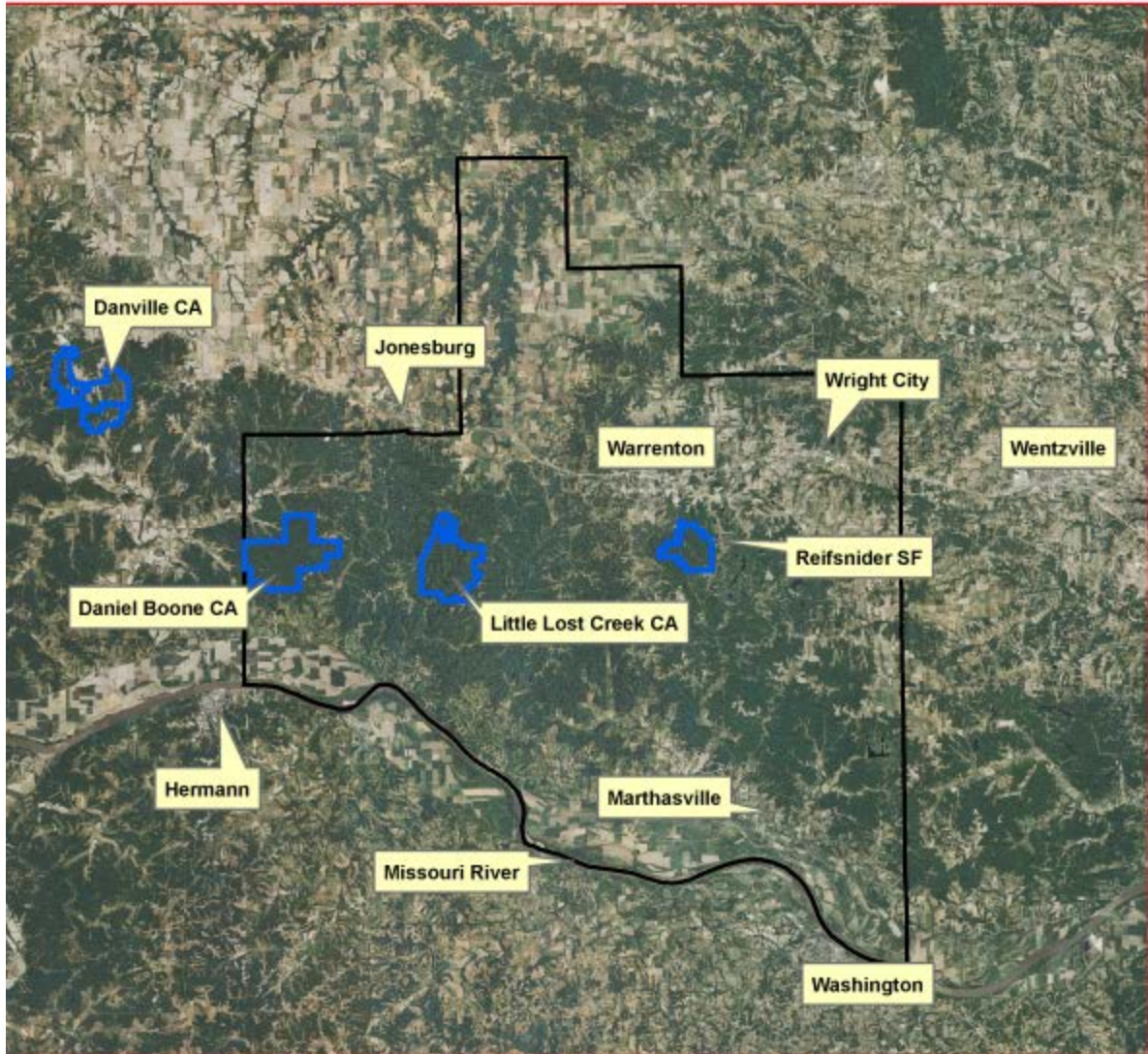


Figure 5: Proximity Map

Little Lost Creek Conservation Area



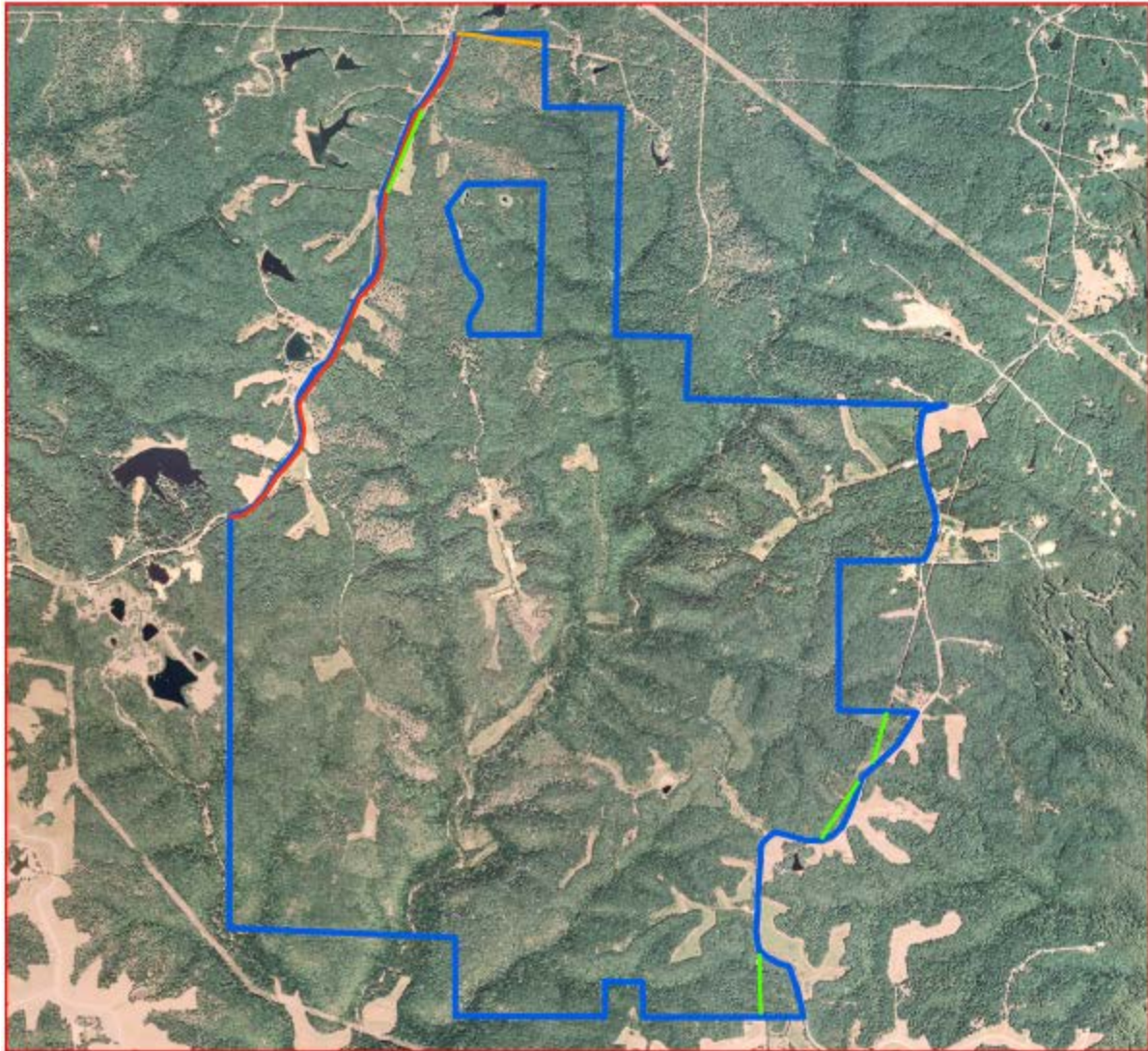
— = MDC land
— = Warren County line



6 3 0 6 Miles

Figure 6: Easement Map

Little Lost Creek Conservation Area



- = property line
- = fiber optic easement
- = electric easement
- = pipeline easement

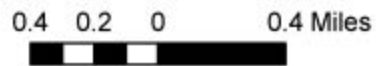
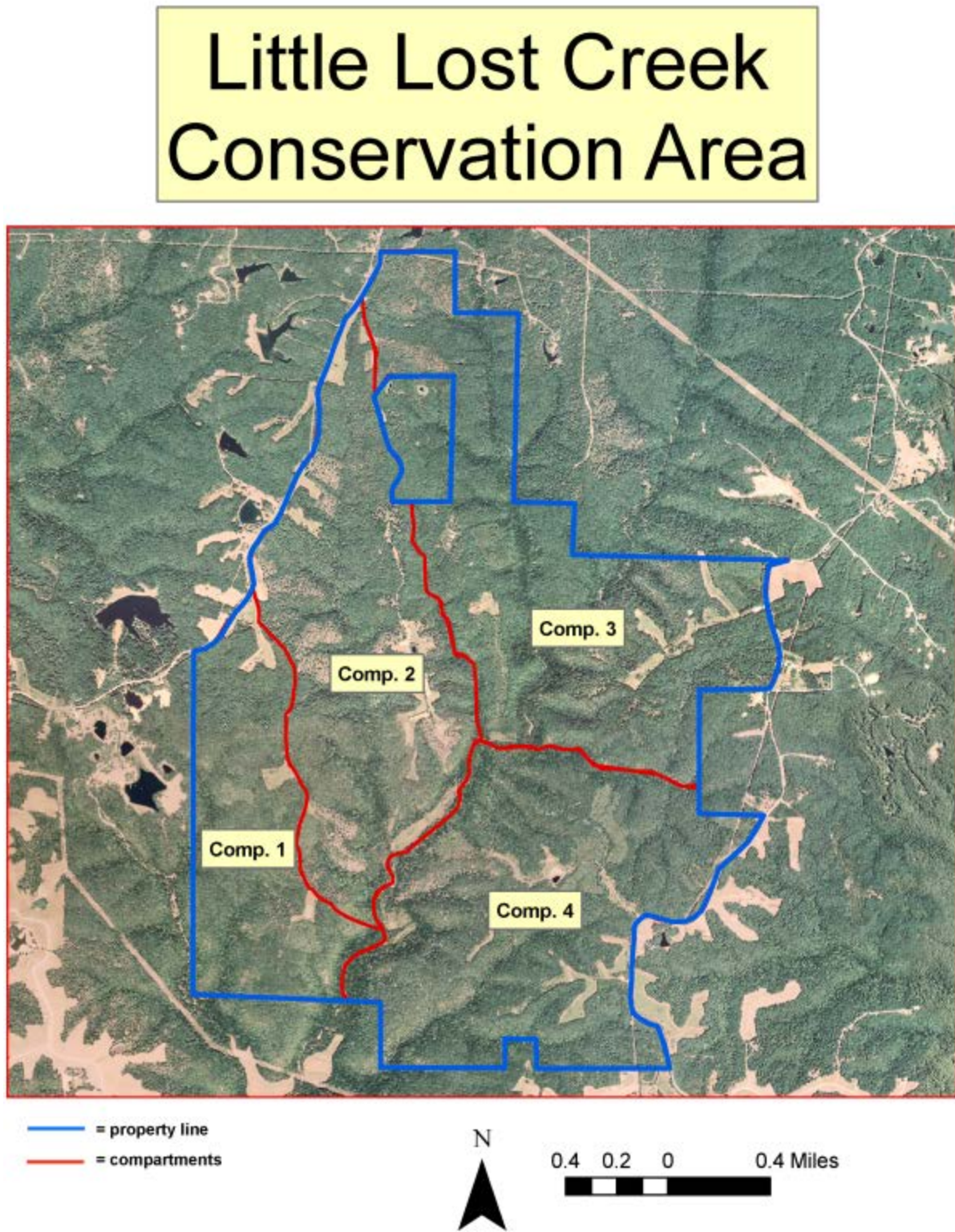


Figure 7: Compartment Map



Appendix A. Little Lost Creek Conservation Area Management Plan Public Comments

Received during public comment period (August 1-31, 2015)

<p>I did several days worth of bird surveys at Little Lost Creek and Daniel Boone during the summer of 2009 for a grant partnership fulfillment. At that time I was quite impressed at the forest management taking place and its overall impact on songbird populations. Based on my understand of the management plan it seems that you all are continuing to actively promote different micro environments within the forest with woodland restoration and selective thinning. Based on my experience on the area I would continue doing what you are doing... The plan seems sound and I appreciated its benefit to non game wildlife.</p>
<p>We own a land property with Hwy B frontage. This property, Lot 2, is for sale, and is part of the Garland Woods development. It is our aim to sell this property for residential use. We are concerned that our land property will or might be rendered useless to us for that purpose, not knowing or understanding the full impact your plan may have on our property. I would appreciate a response by mail or by phone...</p>
<p>I am glad that controlling evasive plant life is mentioned in the plan. Specifically Buckthorn which has taken over my property bordering the area on the north side. Thanks for your efforts, we have one of the best Conservation departments in the country.</p>
<p>So far we have been happy with the management of Little Lost Creek, One thing I have notice over the pass 2 or 3 years is most of the signs along our 2 properties are missing or the trees have fallen which held the signs, the property lines are not very straight which causes us a problem when cutting down dead trees or non desirable trees down such as cotton wood trees. We hope that we have not caused any problem with the few trees we do cut down and have not done so on Conservation property.</p> <p>Also is the a more detailed map of the Little Lost Creek Conservation Area that is available than is show on this web site. Something that show the streams, ponds, trails and access areas in more detail. I am willing to pay for them if they are available.</p> <p>Thanks</p>
<p>Hoping to use this conservation area for horseback riding this fall. Always on board with protecting these areas and using taxpayer dollars to their fullest and best use.</p>
<p>(phone call): Suggests adding a dove field and adding a lake for fishing.</p>
<p>(Hard Copy Comment) Management objective 1 pg 5 & 2 pg 6 need to protect, provide a healthy environment for the honey bees. Help in re-establish bee colonys with buffer zones of pollen and necture plants (bee food plots). Even provide assistance to local land owners. I would like to know whats planted in comp 1 & comp 2</p>
<p>After reading your plan, I would love to see fish stocked in the 4 larger ponds. I have acreage in a near by development and will be building in the area soon, so I have been using the area often,</p>

and my number one complaint would be lack of fishing oppurtunities I have actually seen a quail one of the western parts open area and would love to see some work on bringing them back to the landscape. On the far southern parking lot on HWY B, there was some work done a few years ago and the ground dirt was turned up. This actually attracted some doves that I was able to hunt. I would also love to see some planting's of food plots for doves. The best thing about the area is the fact that there are no roads through the property. This tends to cut down on the distance that people will go in to hunt deer and turkey. In my opinion that is a great thing.

I enjoy riding horses on the trails in this beautiful area. I hope the 10 year plan will include maintaining these trails for equestrian use.

Create public fishing area near one of the larger access points, and possibly rest room facilities like they have in campgrounds (no plumbing).

Thank you for the opportunity to comment on the Draft Little Lost Creek CA Management Plan, and, on behalf of Missouri's trail riders, thank you for permitting equestrian use of the trails on this CA. The public land riding opportunity provided on Little Lost Creek CA helps to meet the demand of the many riders in Warren County and the Greater St. Louis Area.

The seven miles of multi-use trails on the CA is not enough to attract many trail riders because the 2 hours or so required to ride those miles does not represent a quality outdoor experience, one which would make riders want to load their animals and haul to the CA. Little Lost Creek is identified in Show-Me Missouri Back Country Horsemen's 2015 proposal, "Expanding Public Land Multi-Use Trails in Missouri", as an area suitable for adding new trails to the existing network. SMMBCH recommends adding at least five miles of new multi-use trails. SMMBCH offers, subject to the availability of volunteers, to assist in the layout and clearing of the trails.

Public Use Management Consideration Objective 1, Strategy 3, states the need and intent to maintain the multi-use trail. Recognizing that maintaining the trails and associated infrastructure is a big job, SMMBCH further offers to assist the CA manager to identify and organize a local group of riders who will partner with the manager and CA staff to perform that maintenance.

Thank you again for the opportunity to comment.