

Coleman Memorial Conservation Area

Fifteen-Year Area Management Plan FY 2018-2032



Lisa B. Adler

Forestry Division Chief

3-28-18

Date

Coleman Memorial Conservation Area Management Plan Approval Page

PLANNING TEAM

Kevin Hedgpeth, Wildlife Management Biologist

Steven LaVal, Resource Forester

Rhonda Rimer, Natural History Biologist

Jarad Milligan, Conservation Agent

Matt Curry, Private Land Conservationist

Craig Fuller, Fisheries Management Biologist

Jay Barber, Education Consultant

SOUTHWEST REGION

RCT Chair


Signature

2/9/18
Date

FORESTRY DIVISION

Forest Management Chief


Signature

3-26-18
Date

OVERVIEW

- **Official Area Name:** Coleman Memorial Conservation Area, #200701
- **Year of Initial Acquisition:** 2005
- **Acreage:** 64 acres
- **County:** Laclede
- **Division with Administrative Responsibility:** Forestry
- **Division with Maintenance Responsibility:** Forestry
- **Statements of Purpose:**
 - A. Strategic Direction**

Manage for healthy, sustainable, forest, grassland, and aquatic communities for future generations to use and enjoy. Manage to provide educational and appropriate recreational opportunities.
 - B. Desired Future Condition**

The desired future condition of Coleman Memorial Conservation Area (CA) is forested uplands with some grassland/early successional habitat.
 - C. Federal Aid Statement**

N/A

GENERAL INFORMATION AND CONDITIONS

- I. Special Considerations**
 - A. Priority Areas:** None
 - B. Natural Areas:** None
- II. Important Natural Features and Resources**
 - A. Species of Conservation Concern:** None observed.
 - B. Caves:** None
 - C. Springs:** None
 - D. Other:** The conservation area contains three sinkholes.
- III. Existing Infrastructure**
 - One parking lot
 - Gravel walking trail, 1.8 miles
 - One wildlife watering hole, 0.25 acres
- IV. Area Restrictions or Limitations**
 - A. Deed Restrictions or Ownership Considerations:** Ten-year restriction on sale from date of original donation recently expired.
 - B. Federal Interest:** Federal funds may be used in the management of this land. Fish and wildlife agencies may not allow recreational activities and related facilities that

would interfere with the purpose for which the State is managing the land. Other uses may be acceptable and must be assessed in each specific situation.

- C. Easements:** Laclede Electric power line right of way, miscellaneous utility easements along highway frontage, Lebanon City Street easement
- D. Cultural Resources Findings:** No known cultural resources.
- E. Endangered Species:** None observed.
- F. Boundary Issues:** None

MANAGEMENT CONSIDERATIONS

V. Terrestrial Resource Management Considerations

Challenges and Opportunities:

- 1) Manage forest, sinkhole, and grassland natural communities.
- 2) Control invasive species.

Management Objective 1: Preserve old-growth forest character.

Strategy 1: Manage hazard trees along trails, roads, and public use areas.
(Forestry)

Strategy 2: Control and reduce invasive species on the area. (Forestry)

Strategy 3: Use appropriate management strategies such as uneven aged management to allow regeneration of oak species and retention of old-growth character. (Forestry)

Management Objective 2: Restore deep sinkhole to a more natural condition.

Strategy 1: Consider natural or metal fence behind commercial developments and along high-traffic areas to prevent new trash from blowing into the sinkhole.
(Forestry)

Management Objective 3: Develop vegetative screen on east side of property.

Strategy 1: Plant shrubs and trees to provide a natural screen along the open areas along boundary line to create a visual buffer from nearby developed areas.
(Forestry)

Management Objective 4: Prevent soil erosion due to road infrastructure.

Strategy 1: Ensure roads, road-side drainages, and trails are maintained to reduce runoff, sedimentation, and erosion. (Forestry)

Management Objective 5: Control invasive species.

Strategy 1: Periodically monitor area for invasive species and use appropriate strategies to control them, including but not limited to mechanical removal, herbicide application, or prescribed fire. (Forestry)

Strategy 2: Eradicate fescue and other invasive plants from old fields and wooded edges using herbicide applications, and/or mechanical methods such as disking. (Forestry)

Management Objective 6: Restore native grassland communities.

Strategy 1: Replace fescue with native warm-season grasses and forbs. (Forestry)

Strategy 2: Utilize hay contracts to remove thatch and refresh warm-season grasses. (Forestry)

VI. Aquatic Resource Management Considerations

Challenges and Opportunities:

- 1) Protect area watershed.
- 2) Maintain riparian corridors around sinkhole features.

Management Objective 1: Protect and enhance watershed and aquatic habitat.

Strategy 1: Employ appropriate best management practices associated with management and enhancement projects. (Forestry, Fisheries)

Management Objective 2: Maintain riparian corridors as specified in the Department's watershed protection guidelines around sinkhole features (Missouri Department of Conservation, 2014).

Strategy 1: Allow natural vegetative processes to continue. (Forestry, Fisheries)

Strategy 2: Replace dead trees, as needed, to maintain riparian cover. (Forestry, Fisheries)

VII. Public Use Management Considerations

Challenges and Opportunities:

- 1) Develop and maintain an active educational relationship with local schools and youth groups.
- 2) Provide opportunities for outdoor education and recreation in a natural setting.

Management Objective 1: Maintain suitable public access.

Strategy 1: Ensure existing parking lots, trails, and roads are maintained to Department standards. (Forestry)

Management Objective 2: Provide recreational and educational opportunities for the public.

Strategy 1: Maintain interpretive displays and walking trail. (Forestry, Outreach and Education)

Strategy 2: Explore the feasibility of installing an interpretive kiosk at the trailhead to highlight management practices and special area features. (Forestry, Fisheries, Outreach and Education)

Strategy 3: Maintain up-to-date information about Coleman Memorial CA on the Department webpage. (Forestry, Fisheries, Outreach and Education)

Strategy 4: Work with local governments and civic groups to enhance educational opportunities on the area. (Forestry, Outreach and Education)

Management Objective 3: Provide educational opportunities for area schools.

Strategy 1: Coordinate a Conservation Day to be held on the property to raise student awareness of outdoor issues. (Forestry, Outreach and Education)

Strategy 2: Plant native plants and place signage, as needed, to provide educational opportunities for students under the supervision of Department staff. (Forestry, Outreach and Education)

Strategy 3: Develop signs and an area brochure to promote use of the area. (Forestry, Outreach and Education)

Management Objective 4: Develop and maintain facilities for public use.

Strategy 1: Explore the feasibility of constructing an area pavilion and privy. (Forestry, Design and Development)

Strategy 2: Plant wildlife-friendly shrubs as needed. (Forestry, Wildlife)

Strategy 3: Provide nesting boxes through local Future Farmers of America and 4-H groups. (Forestry, Wildlife)

VIII. Administrative Considerations

Challenges and Opportunities:

- 1) Consider land acquisition, when available.

Lands Proposed for Acquisition:

When available, adjacent land may be considered for acquisition from willing sellers. Tracts that improve area access, provide public use opportunities, contain unique natural communities and/or species of conservation concern, or meet other Department priorities, as identified in the annual Department land acquisition priorities, may be considered.

APPENDICES

Area Background:

This tract was donated by Louise Coleman in 2004 for educational use. The deed contains a 10-year restriction on land sale. Missouri Conservation Commission approval for accepting the donation was obtained in April 2005.

The area contains three sinkholes and a small pond. It features an excellent example of mature hardwood forest with large trees and closed canopy. The tract is surrounded by industrial development, an airport, and single-family homes. One sinkhole indicates moist soil vegetation and is wet part of the year.

Area Location: The tract is located within the City of Lebanon on Evergreen Parkway. Lebanon Public Schools has just completed a new middle school adjacent to the property on the south side.

Current Land and Water Types:

Land Type	Acres	% of Area
Forest	40	62
Grassland	24	38
Pond	<1	<1
Total	64	100

Public Input Summary:

The draft Coleman Memorial Conservation Area Management Plan was available for a public comment period July 1–31, 2017. The Missouri Department of Conservation received comments from three respondents (Appendix A). The Coleman Memorial Conservation Area Planning Team carefully reviewed and considered these ideas as they finalized this document. A brief summary of public input themes, including how they were incorporated or why they were not, can be found below. Rather than respond to each individual comment, comments are grouped into general themes and are addressed collectively.

Department responses to themes and issues identified through the Coleman Memorial Conservation Area Management Plan public comment period.

Suggests managing pond for fishing. Suggests enlarging pond and creating an ADA-accessible fishing dock.

The pond at Coleman Memorial CA is used for aquatic habitat and life education. As a mainly fishless pond it serves this purpose well. A small pond filled with aquatic plants is perfect habitat for many species of aquatic insects, as well as frogs and salamanders which need fishless areas to

lay eggs and raise their young. The Lebanon area provides other opportunities for pond fishing at city ponds and Lake of the Ozarks nearby.

Appreciates trail.

Thank you for your support.

Supports attention to sinkhole and educational objectives.

Thank you for your support.

References:

Missouri Department of Conservation. (2014). *Missouri watershed protection practice recommended practices for Missouri forests: 2014 management guidelines for maintaining forested watersheds to protect streams*. Jefferson City, MO: Conservation Commission of the State of Missouri.

Maps:

Figure 1: Area Map

Figure 2: Cover Type Map

Figure 3: Easement Map

Additional Appendices:

Appendix A: Coleman Memorial Conservation Area Management Plan Public Comments

Figure 1: Area Map

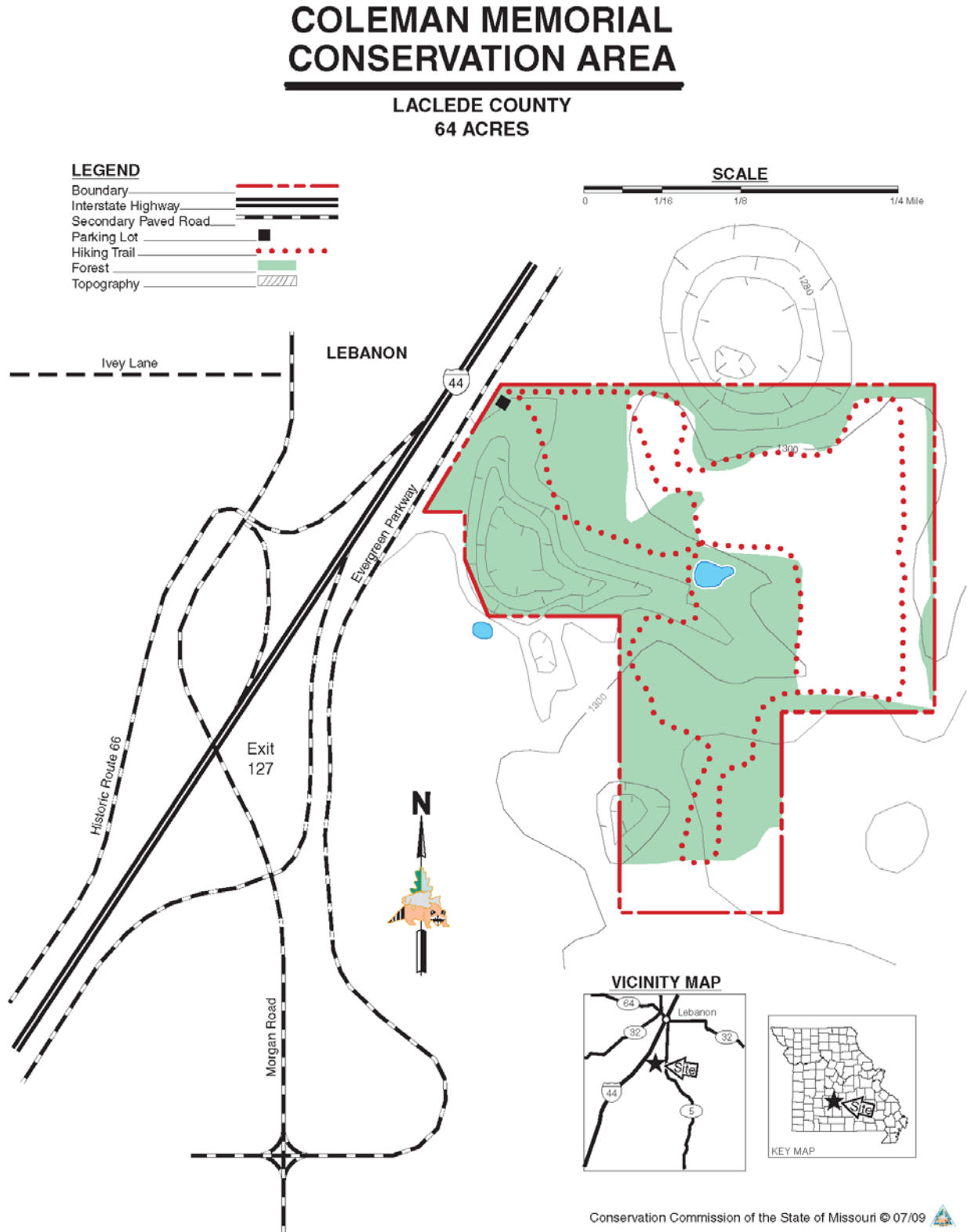


Figure 2: Cover Type Map

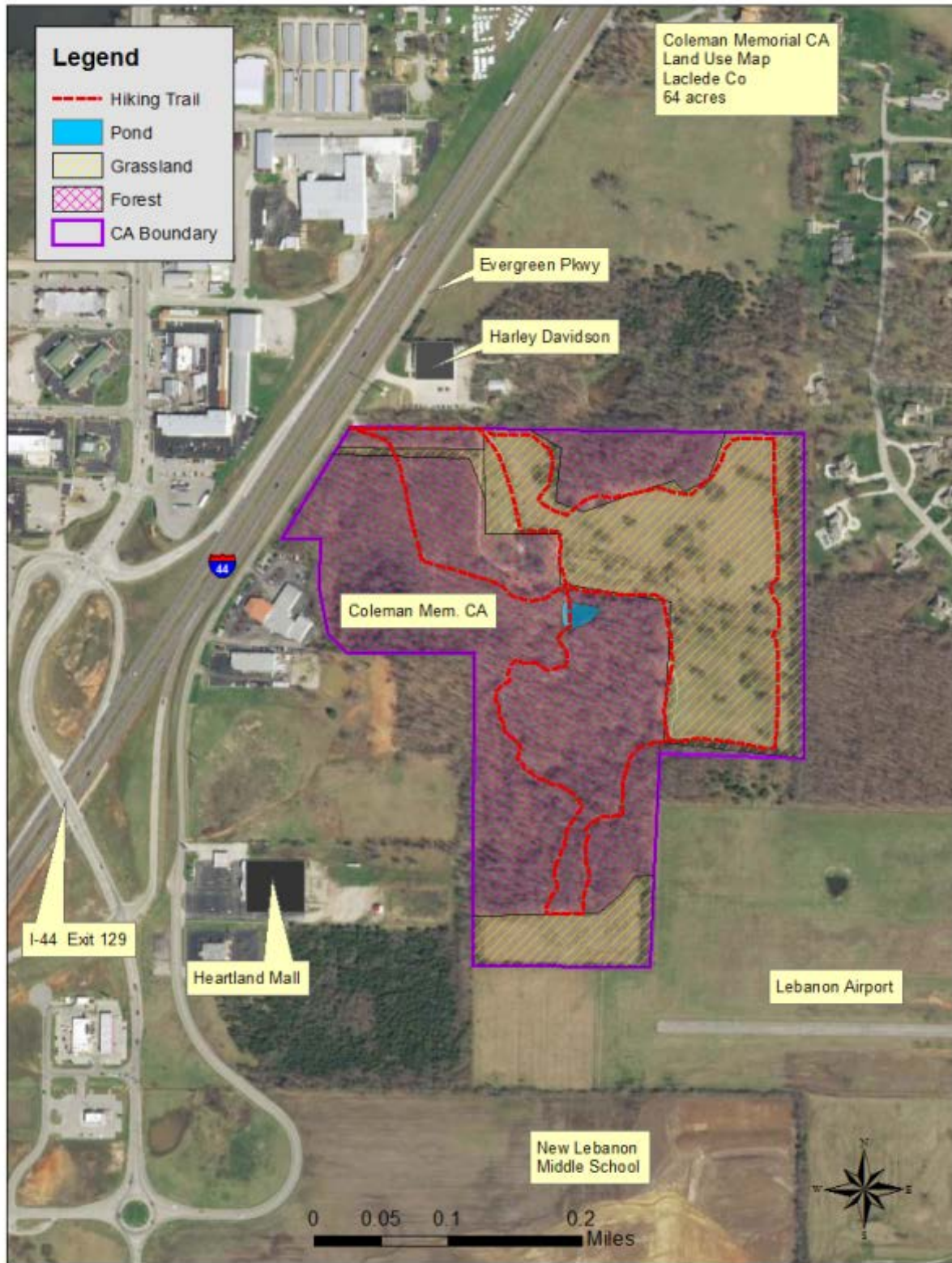


Figure 3: Easement Map



Appendix A: Coleman Memorial Conservation Area Management Plan Public Comments

Received during public comment period (July 1–31, 2017):

I like the trail. I would like to see pond managed for fishing.
Enlarge pond, stock with fish, create fishing dock that is handicap accessible.
I agree with everything in the plan, especially the attention you are going to pay to the sinkhole and to educational objectives. Thank you for the opportunity to review the plan.