

Corry Flatrocks Conservation Area

Fifteen-Year Area Management Plan

FY 2019-2033



Michael M. Schow

Wildlife Division Chief

7/11/18

Date

Corry Flatrocks Conservation Area Management Plan Approval Page

PLANNING TEAM

Kyle Hedges, Wildlife Management Biologist

Ben Parnell, Fisheries Management Biologist

Guerric Good, Resource Forester

Rhonda Rimer, Natural History Biologist

Jeremy Edwards, Conservation Agent

Rick Rath, Private Land Conservationist

Andy Rhodes, Outdoor Skills Specialist

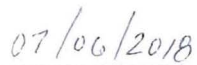
Francis Skalicky, Facilitator

SOUTHWEST REGION

RCT Chair



Signature



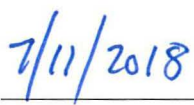
Date

WILDLIFE DIVISION

Wildlife Management Chief



Signature



Date

OVERVIEW

- **Official Area Name:** Corry Flatrocks Conservation Area, #201701
- **Year of Initial Acquisition:** 2016
- **Acreage:** 140 acres
- **County:** Dade
- **Region:** Southwest
- **Division with Administrative Responsibility:** Wildlife
- **Division with Maintenance Responsibility:** Wildlife
- **Statements of Purpose:**
 - A. **Strategic Direction**

The primary purpose of this area is to restore and manage the sandstone glade and woodland natural communities on the area and to provide the public with multiple outdoor recreational and educational opportunities.
 - B. **Desired Future Condition**

The desired future condition of Corry Flatrocks Conservation Area (CA) is a landscape of open sandstone glade and woodland natural communities.
 - C. **Federal Aid Statement**

N/A

GENERAL INFORMATION AND CONDITIONS

- I. **Special Considerations**
 - A. **Priority Areas:** None
 - B. **Natural Area:** None
- II. **Important Natural Features and Resources**
 - A. **Species of Conservation Concern:** Species of conservation concern are known from this area. Area managers should consult the Natural Heritage Database annually and review all management activities with the natural history biologist.
 - B. **Caves:** None
 - C. **Springs:** Yes, records kept with Missouri Department of Conservation (Department) natural history biologist.
 - D. **Other:** This area is located in the Ozark Highlands Section, Springfield Plateau Subsection, and Upper Sac River Oak Savanna/Woodland Low Hills Landtype Association (Nigh & Schroeder, 2002).
- III. **Existing Infrastructure**
 - One 40' x 100' building exists on area and is used for storage

- One parking lot
- One unmanaged fishing pond (0.5 acres, fishing opportunities may be limited due to the pond's small size and condition)

IV. **Area Restrictions or Limitations**

- A. Deed Restrictions or Ownership Considerations:** None
- B. Federal Interest:** Federal funds may be used in the management of this land. Fish and wildlife agencies may not allow recreational activities and related facilities that would interfere with the purpose for which the State is managing the land. Other uses may be acceptable and must be assessed in each specific situation.
- C. Easements:** None
- D. Cultural Resources Findings:** None
- E. Endangered Species:** Yes, endangered species are known from this area. Area managers should consult the Natural Heritage Database annually and review all management activities with the natural history biologist.
- F. Boundary Issues:** None

MANAGEMENT CONSIDERATIONS

V. **Terrestrial Resource Management Considerations**

Challenges and Opportunities:

- 1) Maintain glade and woodland natural communities. Corry Flatrocks CA contains a complex of sandstone glades and woodlands that support a unique assemblage of species. Forested portions of this area are comprised of upland oak and hickory forest. The predominant species include post oak, black oak, red oak, white oak, and a minimal component of chinquapin oaks. The edges of wooded areas are being encroached by Eastern red cedars.
- 2) Maintain healthy grassland habitats.

Management Objective 1: Maintain and restore open sandstone glade and woodland natural communities.

Strategy 1: Reduce cover of woody species (Eastern red cedar, blackjack oak) that are encroaching on sandstone glades, and apply prescribed fire to maintain and restore the natural community and to provide habitat for wildlife. (Wildlife)

Strategy 2: As needed, thin overstory and apply prescribed fire in woodlands to restore the natural community and provide habitat for wildlife. (Wildlife)

Strategy 3: Work with the Missouri Botanical Garden and Resource Science Division to monitor and maintain unique species on the area. (Wildlife, Resource Science)

Strategy 4: Identify and control invasive species by using chemical and/or mechanical methods. (Wildlife)

Management Objective 2: Maintain healthy grassland habitats.

Strategy 1: Restore a native plant assemblage to the grassland area using chemical and/or mechanical methods. (Wildlife)

Strategy 2: Identify and control invasive species using chemical and/or mechanical methods. (Wildlife)

VI. Aquatic Resource Management Considerations

Challenges and Opportunities:

- 1) Maintain and protect aquatic habitat.

Management Objective 1: Maintain and protect aquatic habitat.

Strategy 1: Maintain established forested riparian corridor associated with the spring on the area. (Wildlife, Fisheries)

Strategy 2: Employ appropriate best management practices associated with management and enhancement projects. These are outlined in the Department's *Watershed and Stream Management Guidelines* (Missouri Department of Conservation, 2009). (Wildlife, Fisheries)

VII. Public Use Management Considerations

Challenges and Opportunities:

- 1) Provide for hunting and limited fishing opportunities.
- 2) Provide hiking and nature viewing opportunities.
- 3) Improve educational and interpretive opportunities.
- 4) Build relationships with neighboring landowners.

Management Objective 1: Provide public hunting and nature viewing opportunities.

Strategy 1: Conduct annual management activities that will provide habitat for a diversity of species. (Wildlife)

Management Objective 2: Explore options for developing a special events fishing pond.

Strategy 1: Monitor the pond's environmental conditions throughout the upcoming summer months to determine the suitability as a put-and-take fishery. (Fisheries)

Strategy 2: Determine the condition of the existing fishery. (Fisheries)

Strategy 3: Communicate to teachers, students, scout groups, and youth groups the uniqueness of the area to facilitate as a possible destination for ecology classes, school programs, and workshops. (Outreach and Education, Fisheries)

Management Objective 3: Facilitate a good working relationship with neighboring landowners.

Strategy 1: Work with neighbors to minimize boundary, trespass, or any other issues. (Private Land Services, Protection)

Strategy 2: Promote habitat management on neighboring landowner properties. (Private Land Services)

VIII. Administrative Considerations

Challenges and Opportunities:

- 1) Maintain area infrastructure at current levels.
- 2) Maintain area boundary lines.
- 3) Consider land acquisition, when available.

Management Objective 1: Maintain area infrastructure at current levels.

Strategy 1: Maintain area infrastructure in accordance with Department guidelines and at currently identified maintenance level. (Wildlife)

Management Objective 2: Maintain clearly identified area boundary lines.

Strategy 1: Maintain area boundary lines on a rotating five-year schedule.

Lands Proposed for Acquisition:

When available, adjacent land may be considered for acquisition from willing sellers. Tracts that improve area access, provide public use opportunities, contain unique natural communities and/or species of conservation concern, or meet other Department priorities, as identified in the annual Department land acquisition priorities, may be considered.

APPENDICES

Area Background:

Corry Flatrocks Conservation Area is located in Dade County, approximately 4 miles northeast of Greenfield. The word “Corry” comes from the community of the same name that existed in the area in the 19th century. “Flatrocks” comes from the flat sandstone glades found at the site. This 140-acre area was acquired in 2016 when the Missouri Department of Conservation purchased 92 acres from a private entity and concurrently accepted a 48-acre donation from The Nature Conservancy. The primary focus of the Missouri Department of Conservation management strategies is to protect the 14 acres of high-quality sandstone glade found on the area and to provide opportunities to view, study, and photograph native plants and animals found at this site.

The 14-acre sandstone glade, known as the Corry Flatrocks Glade, is unique, both for its size and continuity. It supports a population of 100,000 threatened plants and provides an excellent opportunity to protect, manage, and study these plants and other species of flora and fauna endemic to glade habitats. The remainder of the area, including 92.75 acres of woodland and 33 acres of established grassland, provides good habitat for deer, turkey, and other species associated with these types of land cover.

The conservation area is open to the public from 4 a.m. to 10 p.m. daily. Special facilities include a storage barn and a parking lot.

Current Land and Water Types:

Land/Water Type	Acres	Miles	% of Area
Forest/Woodlands	92.75		66
Established Grassland	33		24
Glades	14		10
Impounded Water	0.5		<1
Total	140		100
Stream Frontage		0	

Public Input Summary:

The draft Corry Flatrocks Conservation Area Management Plan was available for a public comment period March 1–31, 2018. The Missouri Department of Conservation received comments from one respondent (Appendix A). The Corry Flatrocks Conservation Area Planning Team carefully reviewed and considered these ideas as they finalized this document. A brief summary of public input themes, including how they were incorporated or why they were not,

can be found below. Rather than respond to each individual comment, comments are grouped into general themes and are addressed collectively.

Department responses to themes and issues identified through the Corry Flatrocks Conservation Area Management Plan public comment period.

Appreciates the friendly and professional communication that conservation area staff have had with area neighbors.

We will strive to continue to keep neighbors informed of regulation changes, boundary issues, and general management activities.

References:

Missouri Department of Conservation. (2009). *Watershed and stream management guidelines for lands and waters managed by Missouri Department of Conservation*. Jefferson City, MO: Missouri Department of Conservation.

Nigh, T. A., & Schroeder, W. A. (2002). *Atlas of Missouri ecoregions*. Jefferson City, MO: Missouri Department of Conservation.

Maps:

Figure 1: Area Map

Figure 2: Aerial Map

Figure 3: Topographic Map

Figure 4: Land Cover Map

Additional Appendices:

Appendix A: Corry Flatrocks Conservation Area Management Plan Public Comments

Figure 1: Area Map

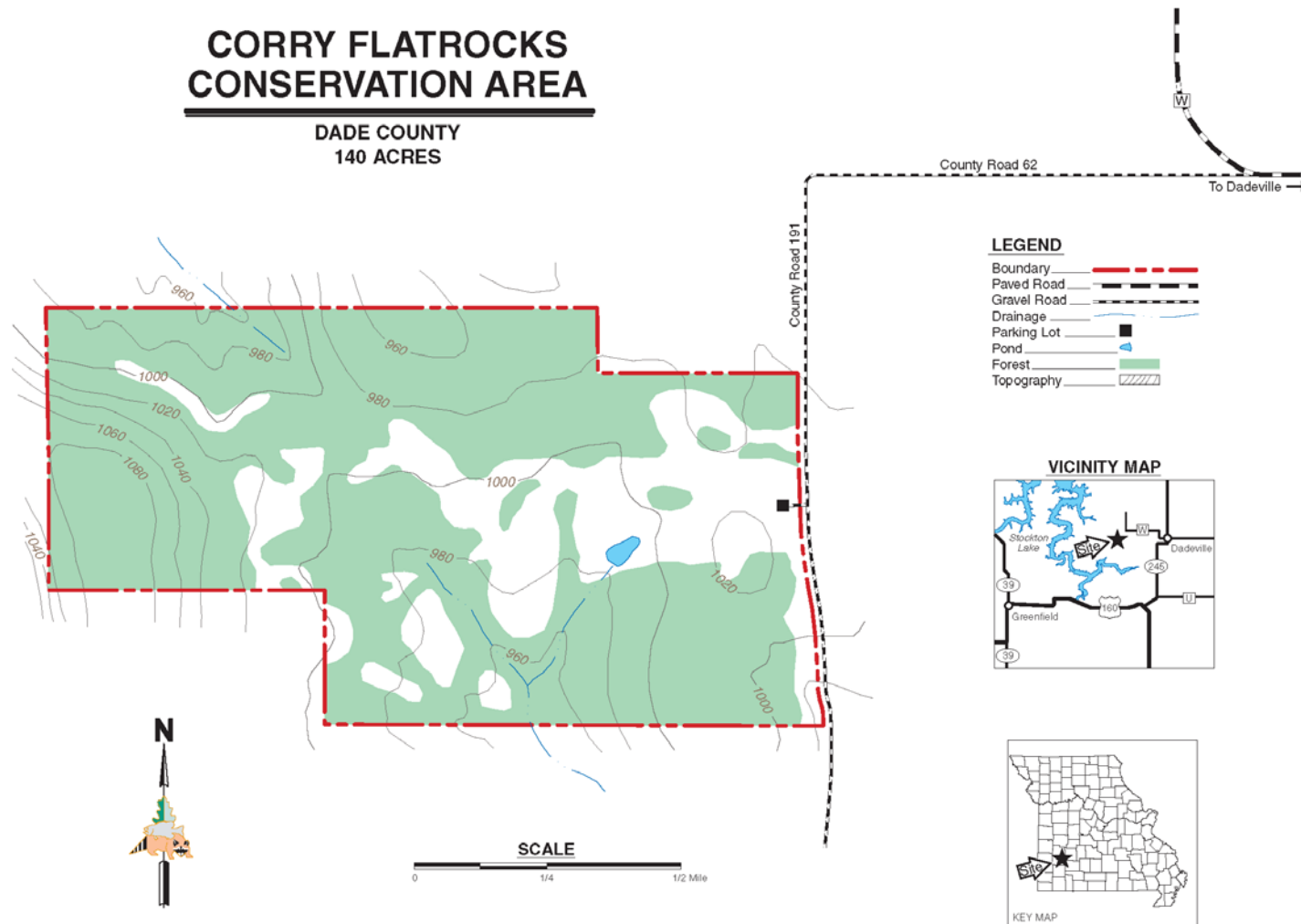


Figure 2: Aerial Map

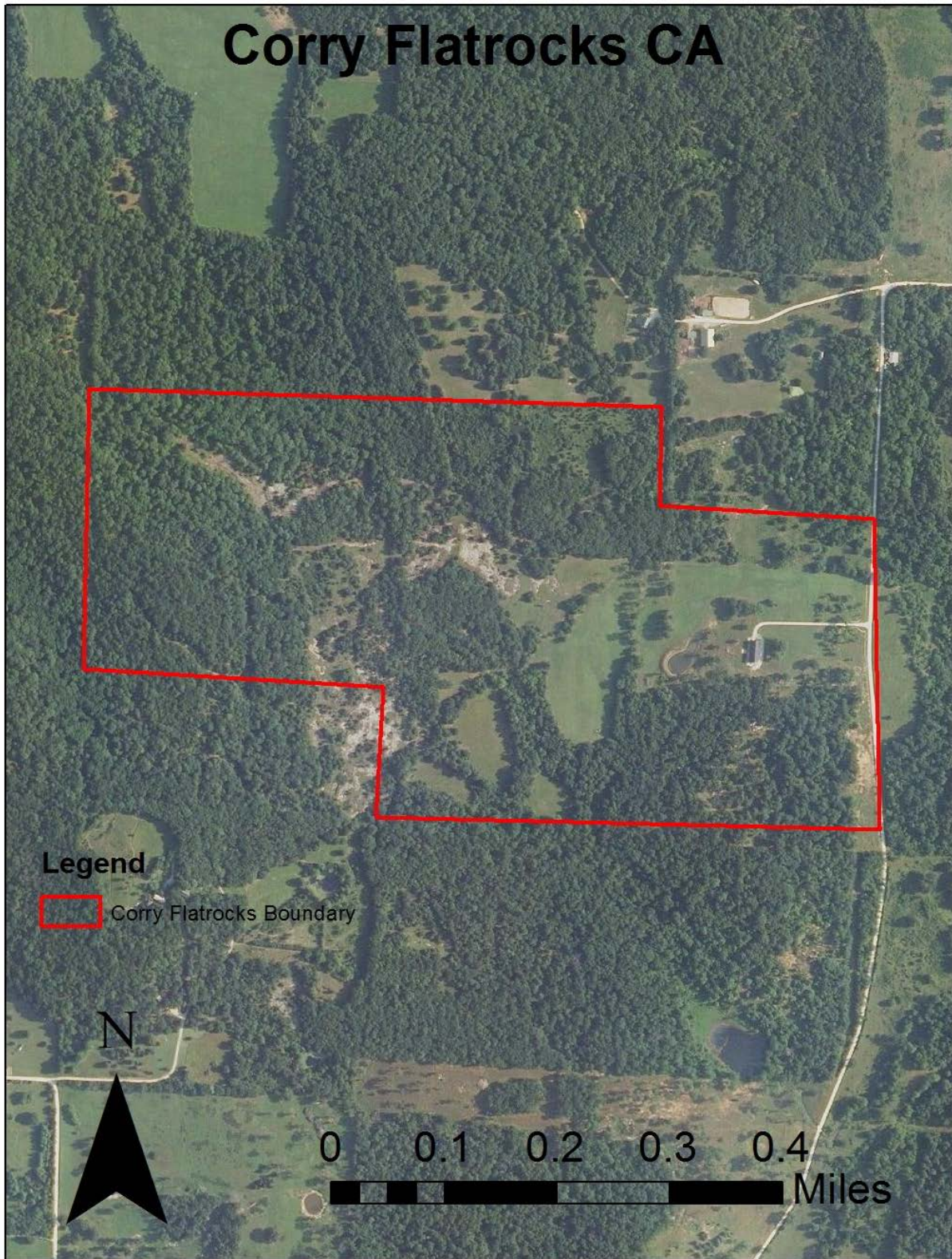


Figure 3: Topographic Map

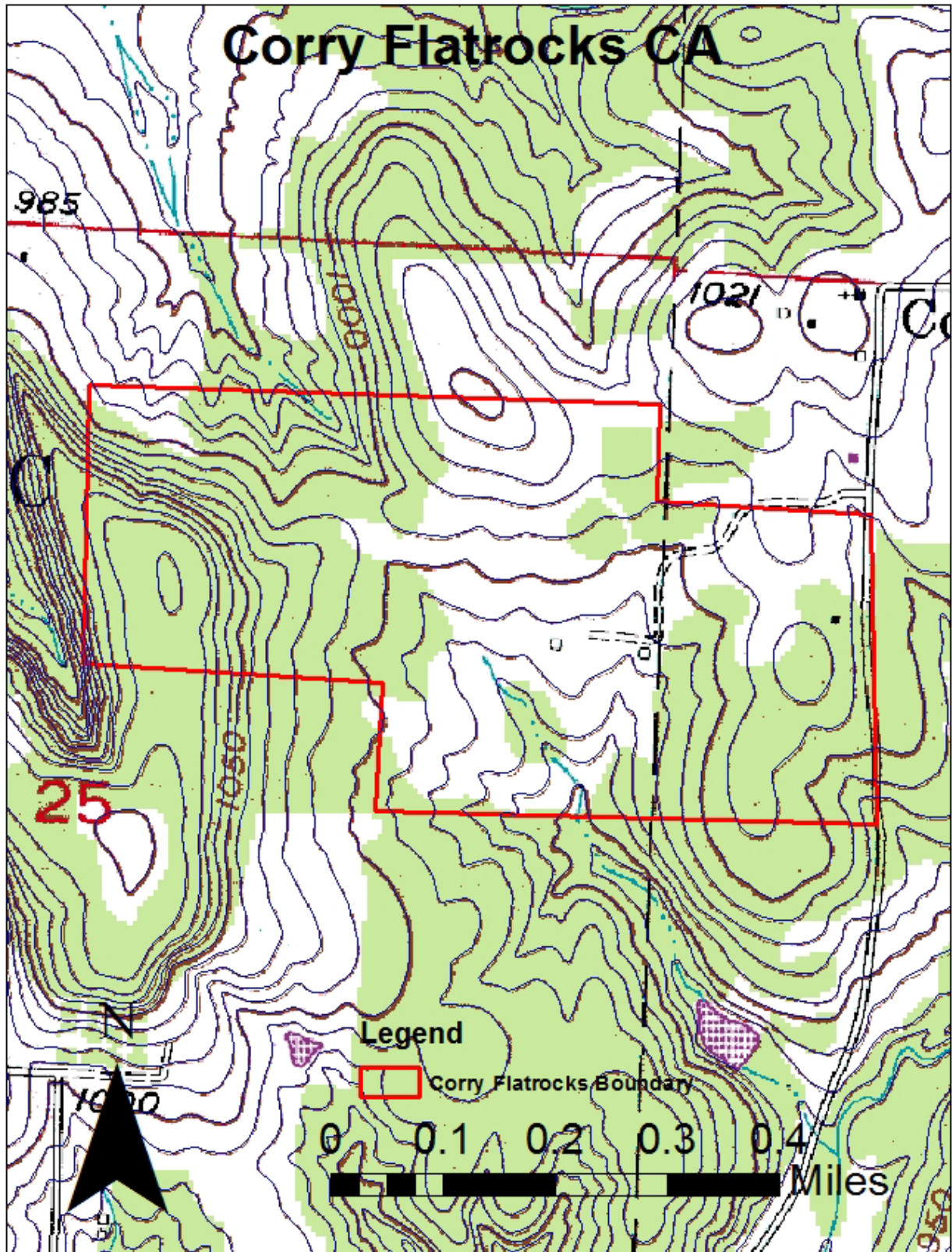
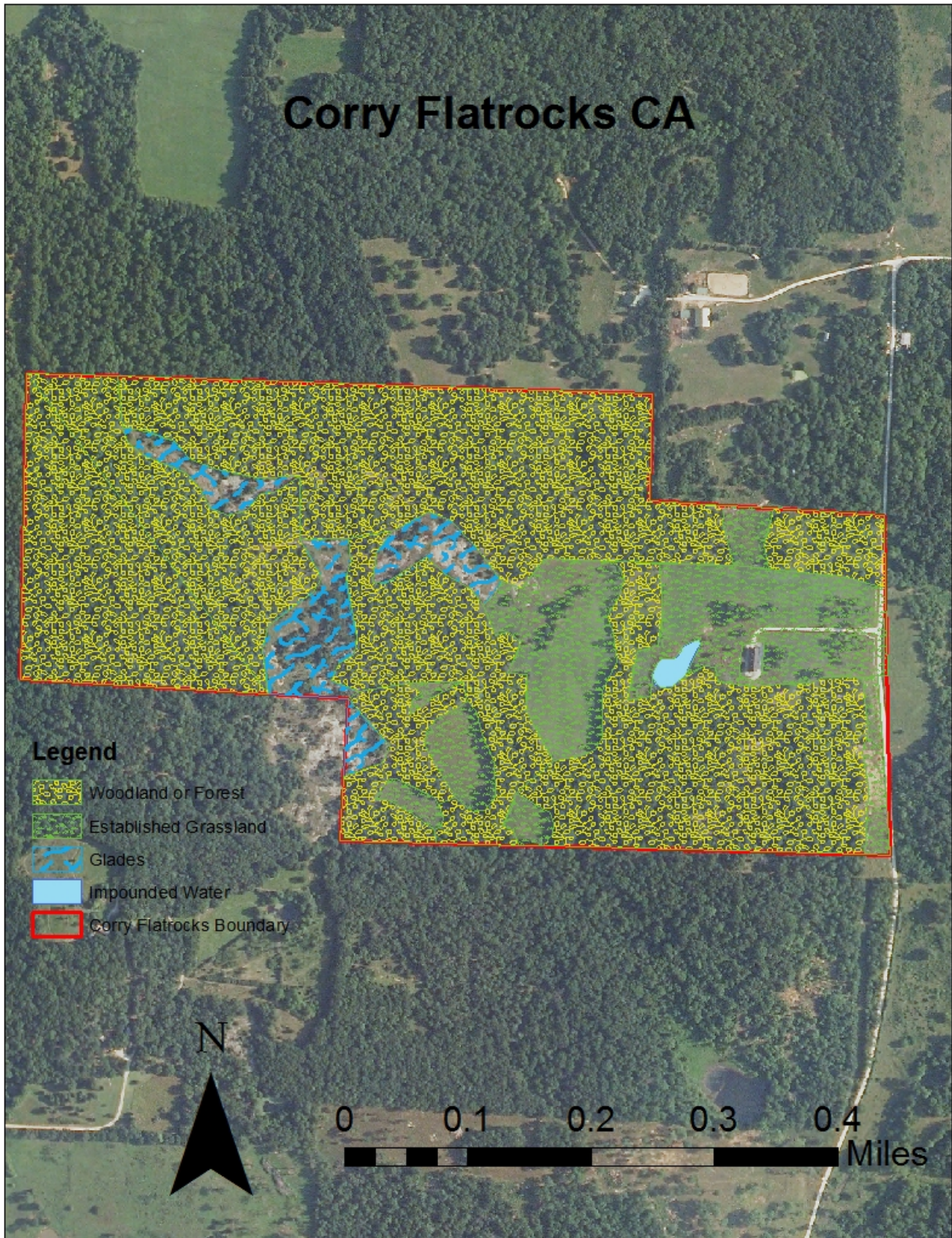


Figure 4: Land Cover Map



Appendix A: Corry Flatrocks Conservation Area Management Plan Public Comments

Received during public comment period (March 1–31, 2018):

We appreciate the good neighbor policy and the friendly, professional staff follow-up.